

TUMBLE DRYERS

DESIGNED TO MEET ALL NEEDS

DD45 SILVER/BRONZE
DD60 SILVER/BRONZE
DD80 SILVER/BRONZE

FEATURES

- Construction in grey skinplate, stainless steel look.
- Big loading door (opening of 180°).
- Transmission by pulley and belt, with inverter.
- Front subjection by 2 strong and high-resistant wheels.
- **DD BRONZE range:** Analogic control with time and temperature selection. Light indication of heating. (These models do not allow the moisture control option).
- **DD SILVER range:** Electronic control. Easy and intuitive to use, the electronic control offers a complete control of the process.
- **REVERSING DRUM:** All models offer the reverse turning of the drum.
- **STAINLESS STEEL DRUM** standard.
- **DOUBLE FLOW:** Mixed axial-radial airflow to optimise and maximise the airflow circuit in the drum.
- **GENTLE DRY:** The new drum with stamped holes makes sure the linen is gently handled.
- New filter drawer with wide surface and improved airflow.
- Cool Down: Anti-wrinkle at the end of cycle.
- Models available in electric, gas or steam heating.

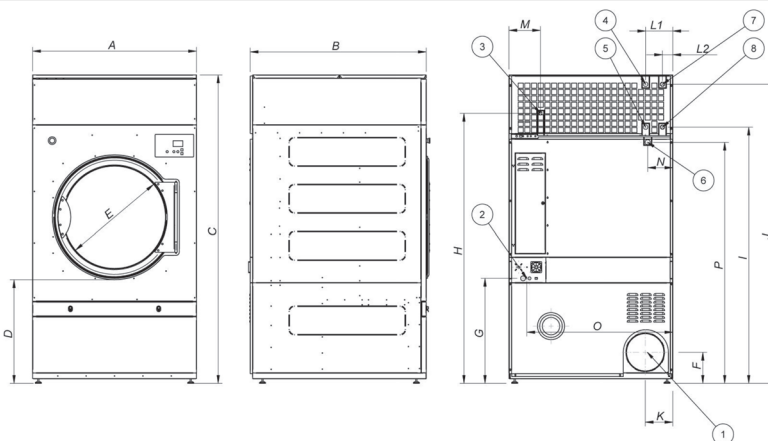


OPTIONS

- **CARE DRY:** Intelligent Moisture Control. (SILVER range).
- **SPRINKLER:** Integrated Fire Extinguishing System. (SILVER range).
- Double doorglass.
- Stainless steel body.
- Stainless steel front panel.
- Low pressure steam battery.
- Model versions in 60 Hz.
- Marine versions 440V III 50/60 Hz No neutral or 480V III 50/60 Hz No neutral.



TECHNICAL DATA	UNIT.	DD45 SILVER/BRONZE	DD60 SILVER/BRONZE	DD80 SILVER/BRONZE			
CAPACITY							
Capacity 1/18	Kg	50	67	83			
Capacity 1/20	Kg	45	60	75			
Hourly Output SILVER/BRONZE	Kg/h	90	120	150			
Evaporation capacity SILVER/BRONZE	l/h	46,6	62,5	76,7			
DRUM							
Ø Drum	mm	1.225	1.225	1.225			
Ø Door	mm	802	802	802			
Door center height	mm	1.275	1.275	1.275			
Load hole bottom height	mm	874	874	874			
Drum length	mm	760	1.020	1.252			
Drum volume	l	896	1.202	1.500			
POWER							
Drum motor power	Kw	0,75	1,1	1,5			
Fan Motor Power SILVER/BRONZE	Kw	1,1	1,1	1,1			
Total Installed power SILVER/BRONZE	Kw	55,9	74,25	74,65			
Electric Heating (Installed power)	Kw	54	72	72			
Gas heating (installed Power) in KW	Kw	60	90	120			
Gas heating (installed el. power) SILVER/BRONZE	Kw	1,9	2,25	2,65			
Steam heating (Steam Power KW)	Kw	91,3	128	128			
Steam heating (installed el. power) SILVER/BRONZE	Kw	1,9	2,25	2,65			
CONNECTIONS							
		ELECTRICAL	STEAM / GAS	ELECTRICAL	STEAM / GAS	ELECTRICAL	STEAM / GAS
Tension 230V - I + T	N° x mm2 / A	-	-	-	-	-	-
Tension 230V - III + T	N° x mm2 / A	-	4 x 1,5 / 20A	-	4 x 1,5 / 32A	-	4 x 1,5 / 32A
Tension 400V - III + N + T	N° x mm2 / A	5 x 35 / 100A	5 x 1,5 / 20A	5 x 50 / 125A	5 x 1,5 / 32A	5 x 50 / 125A	5 x 1,5 / 32A
Ø Gas inlet	BSP		3/4"		3/4"		3/4"
Ø Steam inlet	BSP		1"		1"		1"
Ø Condensed (Steam models)	BSP		1"		1"		1"
DIMENSIONS / PACKING DIMENSIONS							
Width / Width	mm	1.270/1.330	1.270/1.330	1.270/1.330			
Depth / Depth	mm	1.085/1.185	1.345/1.445	1.577/1.677			
Height / Height	mm	2.380/2.085	2.380/2.085	2.380/2.085			
Height without heating battery	mm	1.950	1.950	1.950			
Net weight / Gross weight	Kg	395/430	529/575	657/715			
OTHERS							
Max airflow SILVER/BRONZE	m3/h	3.000	3.000	3.000			
Ø Fume exhaust	mm	300	300	300			
Sound level SILVER/BRONZE	dB	67	67	67			



- 01. Fumes outlet
- 02. Electrical connection
- 03. Gas connection
- 04. Steam connection DD45
- 05. Condensation outlet DD45
- 06. Anti fire water valve
- 07. Steam connection DD60-80
- 08. Condensation outlet DD60-80

	A	B	C	D	E	F	G	H	I	J	K	L1	L2	M	N	O	P
DD45	1.270	1.085	2.380	813	802	240	813	2.088	1.981	2.314	214	211	-	244	195	1.132	1.865
DD60	1.270	1.345	2.380	813	802	240	813	2.088	1.981	2.314	214	-	80	244	195	1.132	1.865
DD80	1.270	1.577	2.380	813	802	240	813	2.088	1.981	2.314	214	-	80	244	195	1.132	1.865