

TUMBLE DRYERS



 **DANUBE**

WE THINK GREEN, WE THINK DANUBE

Our range of tumble dryers was designed to simplify your everyday life and meet the needs of most of our customers in minimizing cycle times while maintaining a high efficiency drying without altering clothes.

Our range of tumble dryers offers the benefits of the most efficient dryers at best value for money. Among the stronger points we would like to highlight: many standard features or options are available to save energy by reducing drying cycles: CARE DRY system to control moisture, SOFT DRY with new drum perforations to lengthen garments lifetime, Air recycle system in GOLD range, double doorglass, insulated panels...standard or optional depending on models.

New Heat Pump technology enabling an installation of the dryer even in places without external access and allowing very low operational cost.

Double drum STD dryers saving space with double output. The dryers range has also grown with new models in different capacities to better complement the range of washers.



RANGE OF MODELS

SINGLE POCKET

DD-GOLD ET2

| CONTROL TYPE | HEATING | CAPACITY <small>NEW</small> | | | | | | | | |
|-----------------------------|------------------------|-----------------------------|----------|----------|----------|----------|----------|----------|----------|----------|
| | | 11-12 kg | 14-15 kg | 17-18 kg | 22-24 kg | 26-29 kg | 33-37 kg | 45-50 kg | 60-67 kg | 75-83 kg |
| EASY TOUCH 2 microprocessor | Electric, gas or steam | DD-11 | DD-14 | DD-16 | DD-23 | DD-28 | DD-35 | DD-45 | DD-60 | DD-80 |

DD-SILVER ET2

| CONTROL TYPE | HEATING | CAPACITY <small>NEW</small> | | | | | | | | |
|-----------------------------|------------------------|-----------------------------|----------|----------|----------|----------|----------|----------|----------|----------|
| | | 11-12 kg | 14-15 kg | 17-18 kg | 22-24 kg | 26-29 kg | 33-37 kg | 45-50 kg | 60-67 kg | 75-83 kg |
| EASY TOUCH 2 microprocessor | Electric, gas or steam | DD-11 | DD-14 | DD-16 | DD-23 | DD-28 | DD-35 | DD-45 | DD-60 | DD-80 |

DD-BRONZE EM

| CONTROL TYPE | HEATING | CAPACITY <small>NEW</small> | | | | | | | | |
|-----------------------|------------------------|-----------------------------|----------|----------|----------|----------|----------|----------|----------|----------|
| | | 11-12 kg | 14-15 kg | 17-18 kg | 22-24 kg | 26-29 kg | 33-37 kg | 45-50 kg | 60-67 kg | 75-83 kg |
| EM Electronic control | Electric, gas or steam | DD-11 | DD-14 | DD-16 | DD-23 | DD-28 | DD-35 | DD-45 | DD-60 | DD-80 |

DD-BASIC EM

| CONTROL TYPE | HEATING | CAPACITY <small>NEW</small> | | | | | | <small>NEW</small> | <small>NEW</small> |
|-----------------------|-----------------|-----------------------------|----------|----------|----------|----------|----------|--------------------|--------------------|
| | | 11-12 kg | 14-15 kg | 17-18 kg | 22-24 kg | 26-29 kg | 33-37 kg | | |
| EM Electronic control | Electric or gas | DD-11 | DD-14 | DD-16 | DD-23 | DD-28 | DD-35 | | |

DOUBLE POCKET

STD-SILVER ET2

| CONTROL TYPE | HEATING | CAPACITY | |
|-----------------------------|-----------------|----------|--------------------------------|
| | | 11-12 kg | 17-18 kg |
| EASY TOUCH 2 microprocessor | Electric or gas | STD-11 | STD-16 |
| EASY TOUCH 2 microprocessor | Gas | - | STD-16 PLUS <small>NEW</small> |

STD-BRONZE EM

| CONTROL TYPE | HEATING | CAPACITY | |
|-----------------------|-----------------|----------|--------------------------------|
| | | 11-12 kg | 17-18 kg |
| EM Electronic control | Electric or gas | STD-11 | STD-16 |
| EM Electronic control | Gas | - | STD-16 PLUS <small>NEW</small> |

STD-BASIC EM

| CONTROL TYPE | HEATING | CAPACITY | |
|-----------------------|-----------------|----------|--------------------------------|
| | | 11-12 kg | 17-18 kg |
| EM Electronic control | Electric or gas | STD-11 | STD-16 |
| EM Electronic control | Gas | - | STD-16 PLUS <small>NEW</small> |

HEAT PUMP

HP-GOLD ET2

| CONTROL TYPE | HEATING | CAPACITY | | |
|-----------------------------|-----------|----------|----------|----------|
| | | 11-12 kg | 17-18 kg | 22-24 kg |
| EASY TOUCH 2 microprocessor | Heat pump | HP-11 | HP-16 | HP-23 |

HP-SILVER ET2

| CONTROL TYPE | HEATING | CAPACITY | | |
|-----------------------------|-----------|----------|----------|----------|
| | | 11-12 kg | 17-18 kg | 22-24 kg |
| EASY TOUCH 2 microprocessor | Heat pump | HP-11 | HP-16 | HP-23 |

SINGLE POCKET

GOLD



THE MOST EFFICIENT



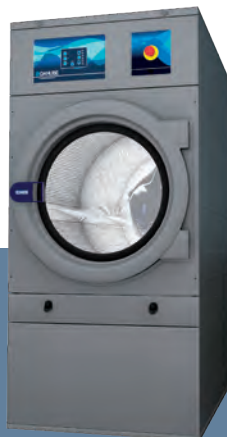
- ✓ ENERGY SAVINGS: air recovery system for great energy efficiency.
- ✓ CARE DRY: intelligent humidity sensor.
- ✓ INSULATED PANELS: complete circuit of air-flow.
- ✓ Double door glass.
- ✓ OPTIMAL FLOW: optimized axial-radial air flow.
- ✓ AIR RECYCLE: air recirculation system.
- ✓ SPRINKLER: integrated fire extinguishing system.
- ✓ Microprocessor ET2: 7" coloured touch screen.
- ✓ Grey skinplate body, stainless steel look.
- ✓ Big loading door (opening of 180°).
- ✓ REVERSING DRUM: standard in all models.
- ✓ STAINLESS STEEL DRUM standard.
- ✓ SOFT DRY: the new drum with stamped holes.
- ✓ FULL SCREEN FILTER: new filter drawer with wide surface and improved airflow.
- ✓ COOL DOWN: anti-wrinkle at the end of cycle.
- ✓ Models available in electric, gas or steam heating.

SILVER



- ✓ Microprocessor ET2: 7" screen for all models. Coloured touch screen.
- ✓ Grey skinplate body, stainless steel look.
- ✓ Big loading door (opening of 180°).
- ✓ REVERSING DRUM: standard in all models.
- ✓ STAINLESS STEEL DRUM standard.
- ✓ DOUBLE FLOW: mixed axial-radial airflow.
- ✓ SOFT DRY: new drum with stamped holes.
- ✓ FULL SCREEN FILTER: new filter drawer with wide surface and improved airflow.
- ✓ COOL DOWN: anti-wrinkle at the end of cycle.
- ✓ Models available in electric, gas or steam heating.
- ✓ OPTIONS
- CARE DRY: intelligent humidity sensor.
- SPRINKLER: integrated fire extinguishing system.
- Double door glass.

BRONZE



- ✓ EM programmer: push buttons to control temperature and time.
- ✓ Grey skinplate body, stainless steel look.
- ✓ Big loading door (opening of 180°).
- ✓ REVERSING DRUM: standard in all models.
- ✓ STAINLESS STEEL DRUM standard.
- ✓ DOUBLE FLOW: mixed axial-radial airflow.
- ✓ SOFT DRY: the new drum with stamped holes.
- ✓ FULL SCREEN FILTER: new filter drawer with wide surface and improved airflow.
- ✓ COOL DOWN: anti-wrinkle at the end of cycle.
- ✓ Models available in electric, gas or steam heating.

BASIC



- ✓ EM programmer: push buttons to control temperature and time.
- ✓ White painted panels.
- ✓ Galvanized drum.
- ✓ Big loading door (opening of 180°).
- ✓ REVERSING DRUM: standard in all models.
- ✓ FULL SCREEN FILTER: new filter drawer with wide surface and improved airflow.
- ✓ COOL DOWN: anti-wrinkle at the end of cycle.
- ✓ Models available in electric or gas heating.

DOUBLE POCKET STD

SILVER



- ✓ Microprocessor ET2: 7" coloured touch screen.
- ✓ Grey skinplate body, stainless steel look.
- ✓ Big loading door (opening of 180°).
- ✓ REVERSING DRUM: standard in all models.
- ✓ STAINLESS STEEL DRUM standard.
- ✓ DOUBLE FLOW: mixed axial-radial airflow.
- ✓ SOFT DRY: new drum with stamped holes.
- ✓ FULL SCREEN FILTER: new filter drawer with wide surface and improved airflow.
- ✓ COOL DOWN: anti-wrinkle at the end of cycle.
- ✓ Models available in electric or gas heating.
- ✓ **NEW model STD- PLUS : gas heated, more powerful for more productivity.**
- ✓ OPTIONS FOR STD SILVER ET2
CARE DRY: intelligent humidity sensor.
SPRINKLER: integrated fire extinguishing system.
Double door glass.

HEAT PUMP

GOLD



- ✓ Tumble dryer with heat pump technology + electric elements to support.
- ✓ Microprocessor ET2: 7" coloured touch screen.
- ✓ Grey skinplate body, stainless steel look.
- ✓ Big loading door (opening of 180°).
- ✓ Double door glass (standard on GOLD).
- ✓ CARE DRY: intelligent humidity sensor (standard on GOLD).
- ✓ REVERSING DRUM: standard in all models.
- ✓ STAINLESS STEEL DRUM standard.
- ✓ SOFT DRY: the new drum with stamped holes.
- ✓ FULL SCREEN FILTER: new filter drawer with wide surface and improved airflow.
- ✓ COOL DOWN: anti-wrinkle at the end of cycle.
- ✓ No need of exhaust to the exterior.
- ✓ Low energy consumption.
- ✓ These models use water to refrigerate, which may be reused to wash.

BRONZE

- ✓ EM programmer: push buttons to control temperature and time.
- ✓ Grey skinplate body, stainless steel look
- ✓ Big loading door (opening of 180°).
- ✓ REVERSE ACTION: standard in all models.
- ✓ STAINLESS STEEL DRUM Standard.
- ✓ DOUBLE FLOW: mixed axial-radial airflow.
- ✓ SOFT DRY: the new drum with stamped holes.
- ✓ FULL SCREEN FILTER: new filter drawer with wide surface and improved airflow.
- ✓ COOL DOWN: anti-wrinkle at the end of cycle.
- ✓ **NEW model STD- PLUS : gas heated, more powerful for more productivity.**
- ✓ OPTIONS FOR STD BRONZE
Double door glass.

SILVER

- ✓ Tumble dryer with HEAT PUMP Technology, without electric elements.
- ✓ Microprocessor ET2: 7" coloured touch screen.
- ✓ Grey skinplate body, stainless steel look.
- ✓ Big loading door (opening of 180°).
- ✓ REVERSE ACTION: standard in all models.
- ✓ STAINLESS STEEL DRUM Standard.
- ✓ SOFT DRY: the new drum with stamped holes.
- ✓ FULL SCREEN FILTER: new filter drawer with wide surface and improved airflow.
- ✓ COOL DOWN: anti-wrinkle at the end of cycle.
- ✓ OPTIONS FOR DD-HP SILVER ET2
CARE DRY: intelligent humidity sensor.
Double door glass.

BASIC

- ✓ EM programmer: push buttons to control temperature and time.
- ✓ White painted panels.
- ✓ Galvanized drum.
- ✓ Big loading door (opening of 180°).
- ✓ REVERSE ACTION: standard in all models.
- ✓ FULL SCREEN FILTER: new filter drawer with wide surface and improved airflow.
- ✓ COOL DOWN: anti-wrinkle at the end of cycle.
- ✓ **NEW model STD- PLUS : gas heated, more powerful for more productivity**
- ✓ Models available in electric or gas heating.

THE HIGHEST ACHIEVING ONE ON THE MARKET

HIGH PERFORMANCE

**ET2 CONTROL ON SILVER AND GOLD
RANGES,** FULLY PROGRAMMABLE
NEW ELECTRONIC EM PROGRAMMER
ON BRONZE AND BASIC



**BIG DIAMETER OF
DOOR.
POSSIBILITY TO
REVERSE THE OPENING
DIRECTION.**

**SKINPLATE OUTER CASING
(EXCEPT BASIC RANGE)**

**STAINLESS STEEL DRUM
WITH REVERSE ACTION
SOFT DRY
(EXCEPT BASIC RANGE)**

**WIDE FLUFF FILTER
AS DRAWER MADE IN
STAINLESS STEEL**



EASY TOUCH 2

- User friendly and totally programmable microprocessor with a 7" **touch screen**
- **USB Connection.** PC software free of charge for programming, traceability, data analysis...
- **Videos shown on display:** ads, instructions. (useful for coin laundry)
- **Optional:**
New dosing/vaporizing system (softeners/perfumes)



CONNECTIVITY

- **Remote technical service:** Machine monitoring, machine error warning, management for traceability and statistics. Remote desk and data recovery for technicians and maintenance, software update, etc.
- **Management for laundries:** OPL and COIN: Our DANUBE IoT solution allows you to manage your laundry business (i.e. create discount programs for customers, get statistics, traceability and laundry monitoring).
- **Remote payment:** App for payments, cashless payment by scanning a QR code, promotions and machine booking.



FEATURES

- Stainless steel drum as standard
- Reversing drum action as standard
- Frequency inverter as standard



EFFICIENCY

- **CARE DRY** intelligent humidity control with new drum inlet temperature control
- **AIR RE-CYCLE.** Efficient air recirculation system. Short drying times, less energy consumption.
- **OPTIMAL FLOW.** New "optimized" system of mixed airflow (Gold version).
- **DOUBLE FLOW.** Axial radial airflow.
- **Big fluff filter**
- **Thermal insulation**



ERGONOMICS

- **Drawer as fluff filter, made of stainless steel**
- **Big door diameters** Helpful for loading and unloading
- **Ideal door height for ergonomic opening**
- **Opening sense of door adjustable on site** (models 11 to 35 kg)
Opening sense can be changed just turning the front panel and adding a part (longer wire to be ordered)
- **Reversible door can be ordered for all dryers, factory fitted**



EASY MAINTENANCE

- **Hinged panel:** Easy and ergonomic access to control panel parts
- **Easy access to parts for reparability:** Dryers are designed to offer an easier maintenance and repair (Example: rear panel in big capacity dryer).
- **Technical menu:** Machine monitoring, machine error warning, management for traceability and statistics. Remote desk and data recovery for technicians and maintenance, software update, etc.



VERSATILITY

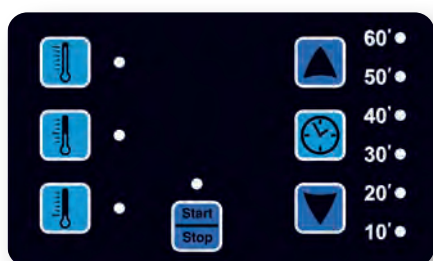
- **MAKE TO ORDER :** New possibility to customize the machines from factory with the available options.
- **WET CLEANING :** Possibility to create different phases per program with its customized parameters.
- **OPL <=> COIN :** Standard OPL model easily transformable for Self Service laundry uses
- **CARE DRY** intelligent humidity control.



EASY TOUCH 2

New EM Electronic control:

Push buttons to control temperature and time. Simple and user friendly. Programmable with external console (optional).



Touch Screen 7"

Coloured touch screen:
Wide 7" screen on all the models with ET2.
Fully programmable: 20 preset programs and possibility to create infinite more.

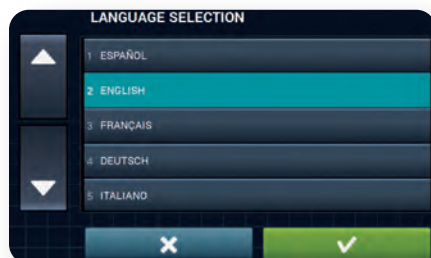
New dosing/ vaporizing system



IoT

Offers feedback from the machines to the device through the cloud, about traceability and statistics to be analyzed and to ensure **maximum hygiene**.





37 languages

Available and easy to configure, thanks to DANUBE aim to be accessible to everyone.

Advertisements shown on display

Very useful for Self-service.



USB connection

PC software free of charge for programming, traceability, data analyses...





FEATURES

All dryers ranges are equipped with important features as standard.

Stainless steel drum

As standard
(Galvanized steel on BASIC only)

Reversing drum action

As standard

Frequency inverter

As standard



EFFICIENCY

HEAT PUMP and GOLD tumble dryers offer a wide variety of standard efficient features to provide important energy savings.

Air recirculation system

Efficient air recovery system.
Short drying times, less energy consumption.



Care Dry

Intelligent humidity control
(standard in GOLD ranges and as option in SILVER ones)

New drum inlet temperature control

A more accurate temperature control in the drum.

Optimal Flow

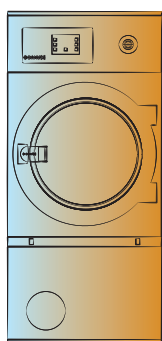
New "optimized" system of mixed airflow in GOLD range.

Double Flow

Axial radial airflow in SILVER, BRONZE and HEAT PUMP.

Insulated panels

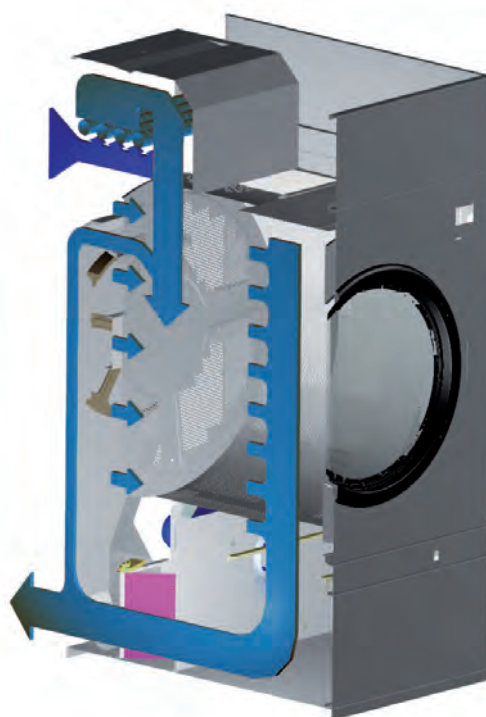
Insulated panels to avoid loss of heat.



THERMAL INSULATION



NO THERMAL INSULATION





VERSATILITY

Tumble dryers between 11 and 35 kg are specially designed for coin sector.

Make to order: customization

New possibility to customize a dryer from factory with various available options.



Wet Cleaning[®]

Our dryers have all the features to use the wet cleaning system.

- ✓ Fully programmable control: possibility to program by phases.
- ✓ Accurate control of in and out temperatures.
- ✓ Precise humidity programming.
- ✓ Adjustable drum speed.



OPL < > Coin

Easy transformation from an OPL to a COIN machine.
Three available options:



BLUEWASH

by Danube



1



Coin / Token

Models easily transformable from OPL to COIN. Coiner, token or mechanical coiner.

2



Central Pay

The dryers can be connected to a central pay with the central pay kit to control a single box with coins.

3

Remote payment

Remote communication ready (Ethernet).
Remote programming and configuration of the machine.
Remote desk and data recovery for technicians and maintenance.
Multi-payable systems: Price programs, price update, etc.
New software for coin OP laundries.



Communication Protocol - Open System

DANUBE equipment is prepared to work with any external payment system (by means of multi-point data, with a simple communication protocol).



CONNECTIVITY



Dealers

You will receive the current historical information of the machines, their operation, current status and much more, so that you can give the best customer support.

- + communication
- + usability
- + control



Technical service

Remote information on machine status, error reporting, history, to facilitate anytime software updates and immediate diagnostics, as well as to reduce technical interventions and trips.

- + information
- + accuracy
- + control



Chemical partners

The knowledge that DANUBE Online provides about wash cycles greatly facilitates the work of chemical partners. An analysis of the processes and study of the results ensures optimal washing, achieving the main objective: maximum hygiene.

- + information
- + ease

Client



Signing up to DANUBE online is the most convenient option for operating from your mobile phone: when you need a laundrette, select the nearest shop, reserve the machine and on completion, pay using your mobile phone.



You can also receive statistics about all your washes and take advantage of special deals.



THE INTERNET OF THINGS



Owners

DANUBE gives you the peace of mind of having control of your business. All you need to do is connect your machines to internet (using an Ethernet cable) and you can monitor your business from home or the office, without physically going to the laundry.

Customers require reliability and efficiency, and you want to provide them. Having the traceability of washing and drying cycles is essential to ensure **maximum hygiene**.

Configure the dashboards, profiles and graphs which best help you to assess and closely monitor your business or businesses in real time. You can view historical or progress data, by machine or groups.

Quick action means efficiency for your business. Confirm technical information such as machine status, historical data, breakdowns and errors, in order to have the machine back up and running as fast as possible.

Share the information and management with whoever you choose: internal or external technicians, collaborators, for the mutual benefit of all.

Prepare special offers, send out news and reach your customers directly to win their loyalty.



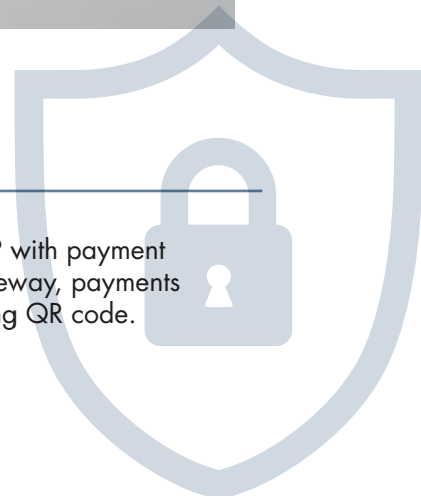
Extremely safe communication

The APP notifies you of the end of the cycle via e-mail.

Manage and organize your expenditure with information such as accumulated turnover.

You will receive special offers, discounts and news conveniently on your mobile phone.

APP with payment gateway, payments using QR code.





ERGONOMICS

Designed to be as comfortable as possible for the user.



Opening sense of door adjustable on site

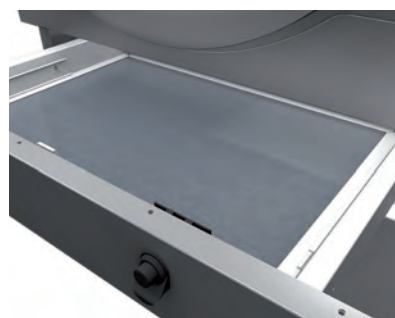
Opening sense can be easily changed in models 11 to 35 kg.
It can also be ordered from factory.

Biggest door diameters

Helpful for loading and unloading

Big fluff filter

Drawer with stainless steel grid, easy to open and clean





EASY MAINTENANCE

Offering quality equipment and parts of reputed brands, which demand little maintenance.

Easy access to parts

Dryers are designed to offer an easy maintenance and reparability

Same parts

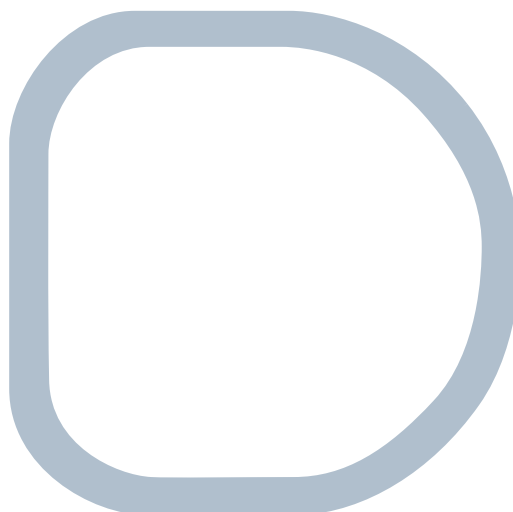
Most models share same critical parts (contactors, electronic devices)

Technical menu

Statistics, alarms, autotest, data recovery for technicians and maintenance

Hinged panel

Easy and ergonomic access to control panel parts



TUMBLE DRYERS TECHNICAL DATA

| | UNIT. | DD-11 | DD-14 | DD-16 | DD-23 | DD-28 | DD-35 | DD-45 | DD-60 | DD-80 |
|--|-------------------------|--------------|---------------|---------------|---------------|----------------|----------------|----------------|----------------|----------------|
| MODEL | | | | | | | | | | |
| Capacity 1/18 | Kg | 12 | 15 | 18 | 26 | 31 | 37 | 50 | 67 | 83 |
| Capacity 1/22 | Kg | 11 | 13,5 | 17 | 23 | 28 | 33 | 45 | 60 | 75 |
| Hourly Output GOLD | Kg/h | 24-21 | 36-32 | 37-33 | 44-41 | 64-56 | 80-70 | 108-96 | 144-129 | 192-171 |
| Hourly Output SILVER-BRONZE-BASIC | Kg/h | 23-21 | 34-30 | 35-33 | 41-35 | 56-53 | 70-65 | 96-90 | 129-120 | 171-160 |
| Evaporation capacity GOLD | l/h | 15 | 15,6 | 16,3 | 23 | 31,8 | 34,7 | 48,2 | 72 | 93,8 |
| Evaporation capacity SILVER-BRONZE-BASIC | l/h | 14,5 | 15,4 | 16,3 | 20,4 | 30,9 | 32,1 | 42,5 | 65,8 | 96,5 |
| DRUM | | | | | | | | | | |
| Ø Drum | mm | 750 | 750 | 750 | 855 | 947 | 947 | 1225 | 1225 | 1225 |
| Ø Door | mm | 574 | 574 | 574 | 574 | 802 | 802 | 802 | 802 | 802 |
| Door center height | mm | 976 | 976 | 976 | 1030 | 1040 | 1040 | 1275 | 1275 | 1275 |
| Load hole bottom height | mm | 689 | 689 | 689 | 743 | 640 | 640 | 874 | 874 | 874 |
| Drum length | mm | 475 | 610 | 746 | 800 | 780 | 936 | 760 | 1020 | 1252 |
| Drum volume | l | 210 | 270 | 330 | 460 | 550 | 660 | 896 | 1202 | 1500 |
| POWER | | | | | | | | | | |
| Drum motor power | KW | 0,37 | 0,37 | 0,37 | 0,37 | 0,55 | 0,55 | 0,75 | 1,1 | 1,5 |
| Fan Motor Power GOLD | KW | 0,55 | 0,55 | 0,55 | 0,75 | 0,75 | 0,75 | 2,2 | 2,2 | 2,2 |
| Fan Motor Power SILVER-BRONZE-BASIC | KW | 0,25 | 0,25 | 0,25 | 0,55 | 0,55 | 0,55 | 1,1 | 1,1 | 1,1 |
| Electric heating power ALL RANGES | KW | 12 | 18 | 18 | 24 | 30 | 36 | 54 | 72 | 72 |
| Total elec. power (elec. mod.) GOLD | KW | 12,97 | 18,97 | 18,97 | 25,17 | 31,35 | 37,35 | 57 | 75,35 | 75,75 |
| Total elec. power (elec. mod.) SILVER-BRONZE-BASIC | KW | 12,67 | 18,67 | 18,67 | 24,97 | 31,15 | 37,15 | 55,9 | 74,25 | 74,65 |
| Gas heating power ALL RANGES | KW | 20,51 | 20,51 | 20,51 | 31 | 41 | 41 | 60 | 90 | 120 |
| Total elec. power (gas mod.) GOLD | KW | 0,97 | 0,97 | 0,97 | 1,17 | 1,35 | 1,35 | 3 | 3,35 | 3,75 |
| Total elec. power (gas mod.) SILVER-BRONZE-BASIC | KW | 0,67 | 0,67 | 0,67 | 0,97 | 1,15 | 1,15 | 1,9 | 2,25 | 2,65 |
| Steam heating power ALL RANGES | KW | 30 | 30 | 30 | 49,2 | 50,1 | 50,1 | 91,3 | 128 | 128 |
| Total elec. power (steam mod.) GOLD | KW | 0,97 | 0,97 | 0,97 | 1,17 | 1,35 | 1,35 | 3 | 3,35 | 3,75 |
| Total elec. power (steam mod.) SILVER-BRONZE-BASIC | KW | 0,67 | 0,67 | 0,67 | 0,97 | 1,15 | 1,15 | 1,9 | 2,25 | 2,65 |
| DIMENSIONS | | | | | | | | | | |
| Net dimensions (W x D x H) | mm | 785x855x1694 | 785x989x1694 | 785x1125x1694 | 890x1255x1812 | 985x1054x1946 | 985x1210x1946 | 1270x1106x2380 | 1270x1366x2380 | 1270x1598x2380 |
| Gross dimensions (W x D x H) | mm | 865x940x1840 | 865x1074x1840 | 865x1210x1840 | 970x1345x1940 | 1065x1154x2080 | 1065x1310x2080 | 1330x1185x2150 | 1330x1445x2150 | 1330x1705x2150 |
| Net Weight | Kg | 172 | 180 | 187 | 210 | 230 | 260 | 395 | 529 | 657 |
| Gross Weight | Kg | 180 | 190 | 200 | 230 | 260 | 285 | 430 | 575 | 715 |
| OTHERS | | | | | | | | | | |
| Max airflow GOLD | m3/h | 1200 | 1200 | 1200 | 1500 | 1500 | 1500 | 4500 | 4500 | 4500 |
| Max air flow SILVER-BRONZE-BASIC | m3/h | 850 | 850 | 850 | 1200 | 1200 | 1200 | 3000 | 3000 | 3000 |
| Ø fume exhaust | mm | 200 | 200 | 200 | 200 | 200 | 200 | 300 | 300 | 300 |
| Noise level | dB | 64 | 64 | 64 | 65 | 65 | 65 | 67 | 67 | 67 |
| AIR RECYCLE | GOLD | STD | STD | STD | STD | STD | STD | STD | STD | STD |
| | SILVER - BRONZE - BASIC | N/A | N/A | N/A | N/A | N/A | N/A | N/A | N/A | N/A |
| CARE DRY | GOLD | STD | STD | STD | STD | STD | STD | STD | STD | STD |
| | SILVER | OPT | OPT | OPT | OPT | OPT | OPT | OPT | OPT | OPT |
| | BRONZE - BASIC | N/A | N/A | N/A | N/A | N/A | N/A | N/A | N/A | N/A |
| THERMAL INSULATION | GOLD | STD | STD | STD | STD | STD | STD | STD | STD | STD |
| | SILVER - BRONZE - BASIC | N/A | N/A | N/A | N/A | N/A | N/A | N/A | N/A | N/A |
| SPRINKLER | GOLD | STD | STD | STD | STD | STD | STD | STD | STD | STD |
| | SILVER | OPT | OPT | OPT | OPT | OPT | OPT | OPT | OPT | OPT |
| | BRONZE - BASIC | N/A | N/A | N/A | N/A | N/A | N/A | N/A | N/A | N/A |
| OPTIMAL FLOW | GOLD | STD | STD | STD | STD | STD | STD | STD | STD | STD |
| DOUBLE FLOW | SILVER - BRONZE | STD | STD | STD | STD | STD | STD | STD | STD | STD |
| | BASIC | N/A | N/A | N/A | N/A | N/A | N/A | N/A | N/A | N/A |
| REVERSING DRUM | ALL RANGES | STD | STD | STD | STD | STD | STD | STD | STD | STD |
| STAINLESS STEEL DRUM | GOLD - SILVER - BRONZE | STD | STD | STD | STD | STD | STD | STD | STD | STD |
| | BASIC | N/A | N/A | N/A | N/A | N/A | N/A | N/A | N/A | N/A |
| SOFT DRY | GOLD - SILVER - BRONZE | STD | STD | STD | STD | STD | STD | STD | STD | STD |
| | BASIC | N/A | N/A | N/A | N/A | N/A | N/A | N/A | N/A | N/A |
| ET2 | GOLD - SILVER | STD | STD | STD | STD | STD | STD | STD | STD | STD |
| EM PROG. | BRONZE - BASIC | STD | STD | STD | STD | STD | STD | STD | STD | STD |

| | UNIT. | STD-11 | STD-16 | STD-16 PLUS | DD-11 HP | DD-16 HP | DD-23 HP |
|--|-----------------------------|---------------|---------------|---------------|--------------------|---------------|---------------|
| MODEL | | | | | | | |
| Capacity 1/18 | Kg | 23 | 37 | 37 | 12 | 18 | 26 |
| Capacity 1/22 | Kg | 22 | 34 | 34 | 11 | 17 | 23 |
| Hourly Output GOLD | Kg/h | - | - | - | 16 | 20 | 22 |
| Hourly Output SILVER-BRONZE-BASIC | Kg/h | 2x14 - 2x13 | 2x21 - 2x20 | 2x39 | 10 | 13 | 15 |
| Evaporation capacity GOLD | l/h | - | - | - | 7,5 | 9,5 | 11,5 |
| Evaporation capacity SILVER-BRONZE-BASIC | l/h | 16,5 | 25,5 | 35,3 | 5 | 6,3 | 6,88 |
| DRUM | | | | | | | |
| Ø Drum | mm | 750 | 750 | 750 | 750 | 750 | 855 |
| Ø Door | mm | 574 | 574 | 574 | 574 | 574 | 574 |
| Door center height | mm | 547 / 1522 | 547 / 1522 | 547 / 1522 | 976 | 976 | 1030 |
| Load hole bottom height | mm | 260/1235 | 260/1235 | 260/1235 | 689 | 689 | 743 |
| Drum length | mm | 475 | 746 | 746 | 475 | 746 | 800 |
| Drum volume | l | 210 | 330 | 330 | 210 | 330 | 460 |
| POWER | | | | | | | |
| Drum motor power | KW | 0,37x2 | 0,37x2 | 0,37x2 | 0,37 | 0,37 | 0,37 |
| Fan Motor Power GOLD | KW | - | - | - | 0,55 | 0,55 | 0,55 |
| Fan Motor Power SILVER-BRONZE-BASIC | KW | 0,25x2 | 0,25x2 | 0,55x2 | 0,55 | 0,55 | 0,55 |
| Electric heating power ALL RANGES | KW | 12x2 | 12x2 | - | 3,8 + 4(7)* | 3,8 + 4(7)* | 3,8 + 4(7)* |
| Total elec. power (elec. mod.) GOLD | KW | - | - | - | 8,77 | 8,77 | 8,77 |
| Total elec. power (elec. mod.) SILVER-BRONZE-BASIC | KW | 25,34 | 25,34 | - | 4,77 | 4,77 | 4,77 |
| Gas heating power ALL RANGES | KW | 12x2 | 12x2 | 24x2 | N/A | N/A | N/A |
| Total elec. power (gas mod.) GOLD | KW | - | - | - | N/A | N/A | N/A |
| Total elec. power (gas mod.) SILVER-BRONZE-BASIC | KW | 1,34 | 1,34 | 1,94 | N/A | N/A | N/A |
| Steam heating power ALL RANGES | KW | N/A | N/A | N/A | N/A | N/A | N/A |
| Total elec. power (steam mod.) GOLD | KW | N/A | N/A | N/A | N/A | N/A | N/A |
| Total elec. power (steam mod.) SILVER-BRONZE-BASIC | KW | N/A | N/A | N/A | N/A | N/A | N/A |
| DIMENSIONS | | | | | | | |
| Net dimensions (W x D x H) | mm | 785x972x1980 | 784x1242x1980 | 784x1443x1980 | 785x1255x1694 | 785x1525x1694 | 890x1590x1812 |
| Gross dimensions (W x D x H) | mm | 865x1055x2126 | 865x1325x2126 | 865x1457x2126 | 865x1380x1840 | 865x1650x1840 | 970x1720x1940 |
| Net Weight | Kg | 260 | 290 | 320 | 342 | 357 | 380 |
| Gross Weight | Kg | 268 | 303 | 349 | 356 | 372 | 395 |
| OTHERS | | | | | | | |
| Max airflow GOLD | m3/h | - | - | - | no need of exhaust | | |
| Max air flow SILVER-BRONZE-BASIC | m3/h | 1000 | 1000 | 750x2 | | | |
| Ø fume exhaust | mm | 200 | 200 | 200x2 | | | |
| Noise level | dB | 64 | 64 | 64 | 64 | 64 | 64 |
| AIR RECYCLE | GOLD | - | - | - | N/A | N/A | N/A |
| | SILVER - BRONZE - BASIC | N/A | N/A | N/A | N/A | N/A | N/A |
| CARE DRY | GOLD HP | - | - | - | STD | STD | STD |
| | SILVER | OPT | OPT | OPT | OPT | OPT | OPT |
| | BRONZE - BASIC | N/A | N/A | N/A | - | - | - |
| THERMAL INSULATION | GOLD | N/A | N/A | N/A | N/A | N/A | N/A |
| | SILVER - BRONZE - BASIC | N/A | N/A | N/A | N/A | N/A | N/A |
| SPRINKLER | GOLD HP | - | - | - | N/A | N/A | N/A |
| | SILVER | OPT | OPT | OPT | N/A | N/A | N/A |
| | BRONZE - BASIC | N/A | N/A | N/A | N/A | N/A | N/A |
| OPTIMAL FLOWGOLD | | - | - | - | N/A | N/A | N/A |
| DOUBLE FLOW | SILVER - BRONZE - STD - HP | STD | STD | STD | STD | STD | STD |
| | BASIC | N/A | N/A | N/A | N/A | N/A | N/A |
| REVERSING DRUM | ALL RANGES | STD | STD | STD | STD | STD | STD |
| STAINLESS STEEL DRUM | GOLD - SILVER - BRONZE - HP | STD | STD | STD | STD | STD | STD |
| | BASIC | N/A | N/A | N/A | N/A | N/A | N/A |
| SOFT DRY | GOLD - SILVER - BRONZE - HP | STD | STD | STD | STD | STD | STD |
| | BASIC | N/A | N/A | N/A | N/A | N/A | N/A |
| ET2 | GOLD - SILVER - HP | STD | STD | STD | STD | STD | STD |
| EM PROG. | BRONZE - BASIC - HP | STD | STD | STD | N/A | N/A | N/A |

**TUMBLE
DRYERS**

www.danube-international.com
www.danube.fr

 **DANUBE**

<https://www.danube-romania.ro>
office@danube-romania.ro



ONNERA GROUP