



DD-BRONZE EM TUMBLE DRYERS

DD-45 / 60 / 80

EM PROGRAMMER

Easy-to-use electronic control with push buttons to control temperature and time



OUTSTANDING FEATURES

Reversing drum action as standard
Stainless steel drum as standard
Frequency inverter as standard



EFFICIENCY

DOUBLE FLOW - mixed axial-radial airflow
Big fluff filter



VERSATILITY

Make to order - customisation



ERGONOMICS

Drawer as fluff filter, made of stainless steel
Biggest door diameters



MAINTENANCE

Technical menu: statistics, alarm, autotest, data recovery for technicians and maintenance with external console

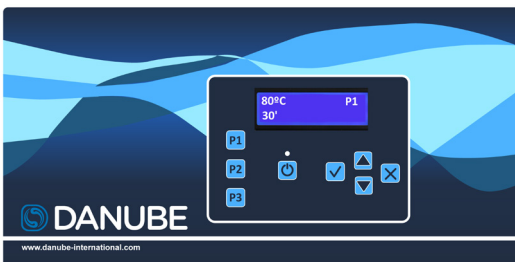


OTHERS

Grey skinplate outer casing, stainless steel look
SOFT DRY - new drum with stamped holes
COOL DOWN - anti-wrinkle at the end of the cycle
Electric, gas and steam heating
CE approved



EM programmer + new display



OPTIONS

- New display for EM programmer
- Double doorglass
- Reverse door opening
- Rear panel with external air inlet + filter
- Stainless steel steam battery
- Low pressure steam battery
- Stainless steel outer casing
- Stainless steel front panel
- Fluff filter with grid 0,6 or 1,2 mm (standard is 0,3 mm)



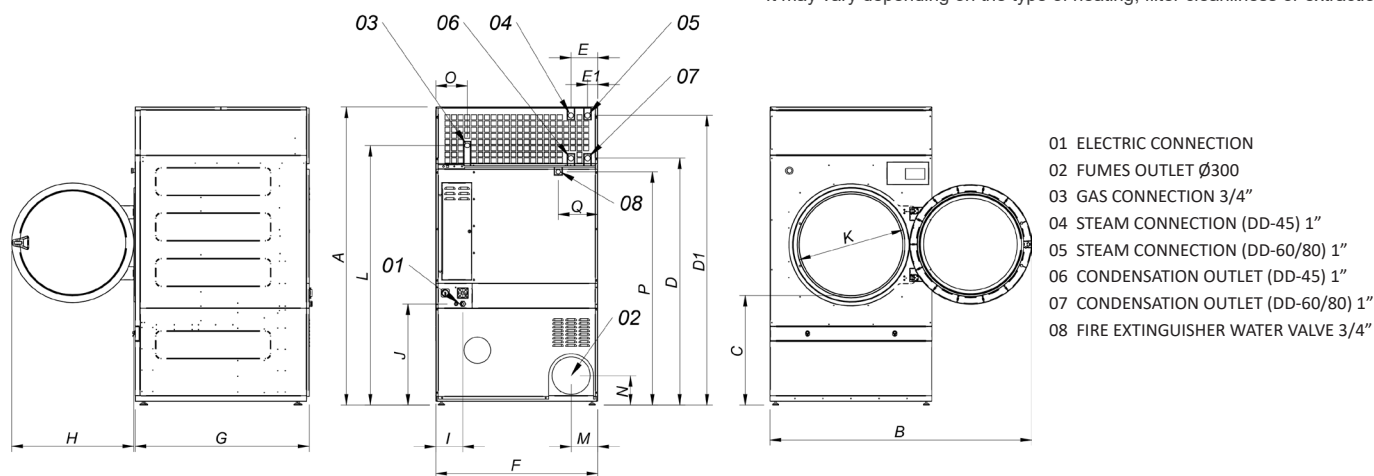
Intertek



Intertek

TECHNICAL DATA	UNIT.	DD-45 BRONZE EM	DD-60 BRONZE EM	DD-80 BRONZE EM			
CAPACITY							
Capacity 1/18	Kg	50	67	83			
Capacity 1/20	Kg	45	60	75			
Hourly Output BRONZE*	Kg/h	96-90	129-120	171-160			
Evaporation capacity BRONZE*	l/h	42,50	65,80	96,50			
DRUM							
Ø Drum	mm	1.225	1.225	1.225			
Ø Door	mm	802	802	802			
Door center height	mm	1.275	1.275	1.275			
Load hole bottom height	mm	874	874	874			
Drum length	mm	760	1.020	1.252			
Drum volume	l	896	1.202	1.500			
POWER							
Drum motor power	Kw	0,75	1,10	1,50			
Fan motor power BRONZE	Kw	1,10	1,10	1,10			
Electric heating power ALL RANGES	Kw	54	72	72			
Total electric power (elec.model) BRONZE	Kw	55,90	74,25	74,65			
Gas heating power ALL RANGES	Kw	60	90	120			
Total electric power (gas model) BRONZE	Kw	1,90	2,25	2,65			
Steam heating power ALL RANGES	Kw	91,30	128	128			
Total electric power (steam model) BRONZE	Kw	1,90	2,25	2,65			
CONNECTIONS		ELECTRICAL	STEAM / GAS	ELECTRICAL	STEAM / GAS	ELECTRICAL	STEAM / GAS
Tension 230V - I + N + T	Nº x mm2 / A	-	-	-	-	-	-
Tension 230V - III + T	Nº x mm2 / A	-	4 x 2,5 / 20A	-	4 x 2,5 / 32A	-	4 x 2,5 / 32A
Tension 400V - III + N + T	Nº x mm2 / A	5 x 35 / 100A	5 x 1,5 / 20A	5 x 50 / 125A	5 x 1,5 / 32A	5 x 50 / 125A	5 x 1,5 / 32A
Ø Gas inlet	BSP	3/4"	3/4"	3/4"	3/4"	3/4"	3/4"
Ø Steam inlet	BSP	1"	1"	1"	1"	1"	1"
Ø Condensed (Steam models)	BSP	1"	1"	1"	1"	1"	1"
DIMENSIONS / PACKING DIMENSIONS							
Net Width / Gross Width	mm	1.270 / 1.330	1.270 / 1.330	1.270 / 1.330	1.270 / 1.330	1.270 / 1.330	1.270 / 1.330
Net Depth / Gross Depth	mm	1.106 / 1.185	1.366 / 1.445	1.366 / 1.445	1.366 / 1.445	1.598 / 1.705	1.598 / 1.705
Net Height / Gross Height	mm	2.380 / 2.150	2.380 / 2.150	2.380 / 2.150	2.380 / 2.150	2.380 / 2.150	2.380 / 2.150
Height without heating battery	mm	1.950	1.950	1.950	1.950	1.950	1.950
Net weight / Gross weight	Kg	395 / 430	529 / 575	529 / 575	529 / 575	657 / 715	657 / 715
OTHERS							
Max airflow BRONZE	m3/h	3.000	3.000	3.000	3.000	3.000	3.000
Ø Fume exhaust	mm	300	300	300	300	300	300
Sound level BRONZE	dB	67	67	67	67	67	67

* It may vary depending on the type of heating, filter cleanliness or extraction type.



	A	B	C	D	D1	E	E1	F	G	H	I	J	K	L	M	N	O	P	Q
DD-45	2380	2045	874	1981	2311	211	80	1270	1106	956	230	870	802	2088	214	240	244	1841	308
DD-60	2380	2045	874	1981	2311	211	80	1270	1366	956	230	870	802	2088	214	240	244	1841	308
DD-80	2380	2045	874	1981	2311	211	80	1270	1598	956	230	870	802	2088	214	240	244	1841	308