

FRONT LOADING WASHER EXTRACTORS

INTERACTIVE
CATALOGUE



A WIDE AND VERSATILE RANGE

By

 **DANUBE**

The Danube range of high and normal spin washer extractors offers a wide choice of capacities that meet the needs of all type of structures and perform the most demanding services in all types of laundries: commercial, industrial or self-service.

Equipped with the EASY TOUCH 2 control, featuring a large user-friendly touch screen and many features, the entire range offers low water, detergents and energy consumption while ensuring high productivity. The ET2 control also allows all models to be ready for connectivity.

New capacities in 60 and 80 kg complete this already extensive range.



RANGE OF MODELS

HIGH SPIN - G FACTOR 500-450 SOFT MOUNTED							
CONTROL TYPE	HEATING	CAPACITY					
		10 - 11 kg	13 - 14 kg	18 - 20 kg	22 - 25 kg	28 - 31 kg	
Microprocessor ET2	Electric, hot water & steam	WED-11 ET2 G factor 500	WED-14 ET2 G factor 500	WED-18 ET2 G factor 500	WED-22 ET2	WED-28 ET2	
		BIG CAPACITY					
		35 - 39 kg	45 - 50 kg	59 - 65 kg	77 - 85 kg	95 - 105 kg	115 - 130 kg
		WED-35C ET2	WED-45C ET2	WED-60C ET2	WED-80C ET2	WED-100C ET2	WED-120C ET2

NORMAL SPIN - G FACTOR 200 - HARD MOUNTED							
CONTROL TYPE	HEATING	CAPACITY					
		10 - 11 kg	13 - 14 kg	18 - 20 kg	22 - 25 kg	28 - 31 kg	
Microprocessor ET2	Electric, hot water & steam	WEN-11 ET2	WEN-14 ET2	WEN-18 ET2	WEN-22 ET2	WEN-28 ET2	
		BIG CAPACITY					
		35 - 39 kg	45 - 49 kg	60 - 66 kg	80 - 88 kg		
		WEN-35C ET2	WEN-45C ET2	WEN-60C ET2	WEN-80C ET2		

HEATING CODES: E = ELECTRIC, HW = HOT WATER, S = STEAM

Note: all models can be easily converted to coin mode with a coin kit or central pay, see coin section.

RANGE 11 - 14 - 18 - 22 - 28 - 35 - 45 - 60 - 80 - 100 - 120 KG

G-FACTOR 500



WED HIGH SPIN

G-FACTOR 500/450/350 SOFT MOUNTED

- ✓ Easy Touch 2 control with 7" touch screen.
- ✓ Soft mounted washers, free standing.
- ✓ Outer casing in grey skinplate.
- ✓ **Danube online - connectivity IOT standard.**
- ✓ R.P.M. between 678 - 1300.
- ✓ Vat and drum in AISI 304 stainless steel.
- ✓ 3 water inlets.
- ✓ 8 signals for dosing pumps.
- ✓ Easy to install, no need of anchorage to the floor, no extra costs.
- ✓ Savings due to high extraction of water. (about 45% residual humidity).

RANGE 11 - 14 - 18 - 22 - 28 - 35 - 45 - 60 - 80 KG



WEN NORMAL SPIN

G-FACTOR 200/150 HARD MOUNTED

- ✓ Easy Touch 2 control with 7" touch screen.
- ✓ Hard mounted washers.
- ✓ Anchoring to floor with anchoring base.
- ✓ **Danube online - connectivity IOT standard.**
- ✓ Outer casing in grey skinplate.
- ✓ R.P.M. between 505-762.
- ✓ Vat and drum in AISI 304 stainless steel.
- ✓ 3 water inlets.
- ✓ 8 signals for dosing pumps.
- ✓ Savings due to high extraction of water (about 65% residual humidity).

HIGH PERFORMANCE



EASY TOUCH 2

- User friendly and totally programmable **7" EASY TOUCH 2.**
- **USB Connection.** Free PC software online for programming, telemetry, data analysis.
- **Danube Online communication standard - Free and easy connection to IoT.**
- **Telemetry standard.**
- **Wet cleaning ready.**
- **Videos shown on display** (very useful for Self-service).
- **37 languages.**
- **8 dosing signals as standard + optional 6 extra dosing signals.**
- **20 preset programs.**



G FACTOR

- **High G-FACTOR for all range of washers comparing with competitors :**
G-FACTOR 500-450 for High spin washers.
G-FACTOR 200 for normal spin washers.
- Reduced residual moisture, reduced drying time.



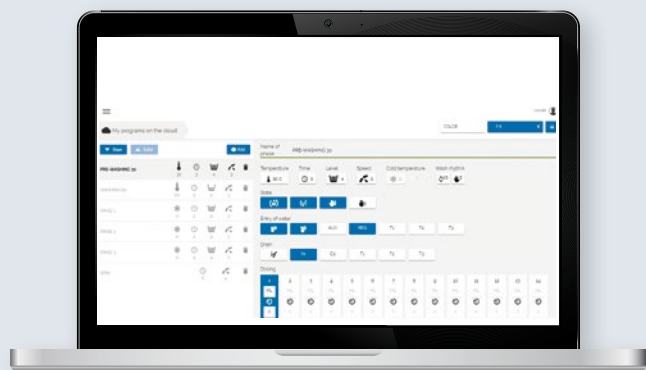
VERSATILITY

- **MAKE TO ORDER.** Possibility to customize machines from factory with available options.
- **OPL <> COIN.** Standard model easily transformable.
- **ELECTRIC <> HOT WATER.** Standard Electric model easily transformable to Hot Water model.
- **DRAIN <> VALVE PUMP.** Standard model easily transformable. Easy access and service.
- **WET CLEANING.** All washers have all features to use WET CLEANING programs.
- **Aqua flow:** recirculation of the bath water.



CONNECTIVITY

- **Danube Online - IoT connectivity standard:** machine monitoring, error warning, remote desk and data recovery for technicians and maintenance, software updates...
- **Management of OPL or coin-operated laundries:** Danube IoT solution allows you to manage your laundry business (create discount programs, get statistics, telemetry, laundry monitoring...).
- **Remote payment:** App for payment, cashless payment by scanning a QR code, promotions and machine booking.





EFFICIENCY

- **Water saving:** Possibility of configuring three levels of savings.
- **Intelligent consumption (standard):** automatic adjustment of water and detergent consumption.
- **Optimal loading:** manual indication of load weight.
- **Low water consumption:** less than 8,2 lt/kg and cycle (60°C standard cycle).
- **Facteur G élevé 500-450.** Reduced residual moisture. Reduced drying time.
- **AQUABAC & New AQUABAC XL:** water recovery tanks ready.



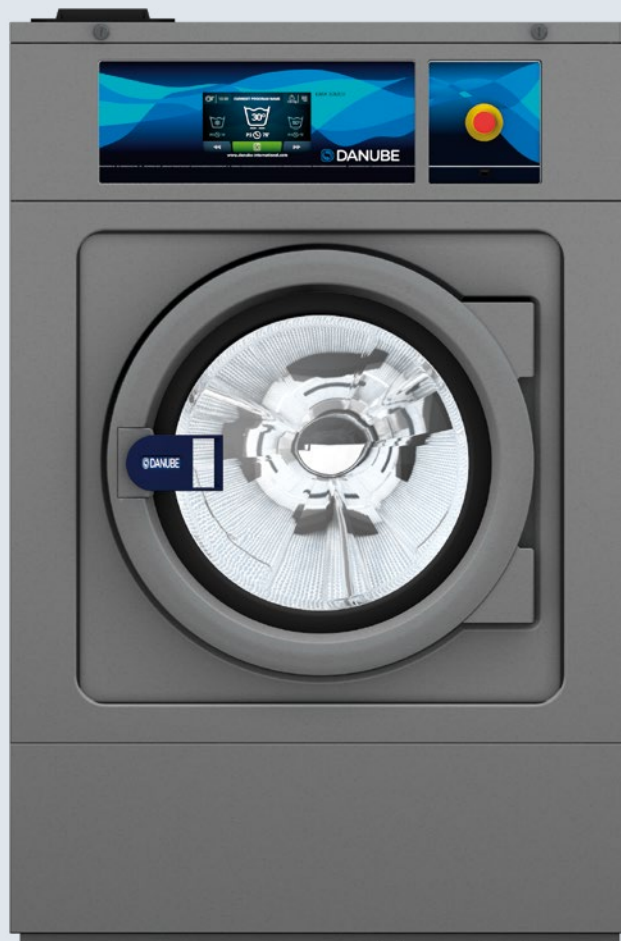
EASY MAINTENANCE

- **Hinged panel.** Easy and ergonomic access to control panel parts.
- **Same parts for all models.** Many key parts are the same for all the models (inverter, contactors, electronic elements, gear).
- **Easy Access to parts for reparability.** Washers are designed to make easier maintenance and reparability.
- **Technical menu:** telemetry, error diagnosis, machine monitoring, software update.



ERGONOMICS

- Big loading door (Ø 373 to 700 mm according to models).
- **Easy door opening / closing system.**
- **Ergonomic plinth for models from 11 to 45 kg:** for door loading height at 850 mm.





EASY TOUCH 2

Programming

User-friendly and intuitive programming.
8 signals for automatic liquid dosing,
programmable in time and delay.
Option: extension to 14 signals.



Telemetry

All washing process (temperatures, water levels) is stored in the washer and can be extracted to a pc by means of a pen drive.

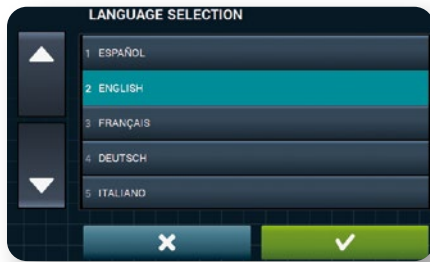
Connectivity and external software

Wash Control: software to make programs from a PC and introduce into the washer by USB.
Remote Control: to access to the data in the washer and modify configuration or check technical information without need of visiting the customer.



IoT - Danube Online

Offers feedback from the machines to the device through the cloud, about telemetry and statistics to be analyzed and to ensure **maximum hygiene**.



Touch Screen 7".
 Programmer: 37 available languages.
 USB port for washer's software updates and other applications.
 Easy Touch 2 Control for OPL washers and coin washers.

Advertisements shown on display

Very useful for Self-service.



USB connection

PC software (Wash Control) free of charge for programming, telemetry, data analyses...



G FACTOR

DANUBE washer extractors drastically reduce the residual moisture after the washing process, thus allowing important savings in the process that follows such as drying and ironing.

High G-factor reduces residual moisture and drying time

The higher the G-Factor, the more water extraction and less residual moisture in the clothes. To get a higher G-factor the construction of the machine is different, going from a hard mounted to a soft mounted one.

WATCH VIDEO

LOW

HIGH

HARD MOUNTED CONSTRUCTION

SOFT MOUNTED CONSTRUCTION

Extraction



G-Factor



Residual moisture

65 %



44 %



Drying laundry is more efficient with a high spin washer because the drying cycle is much shorter: time and energy savings



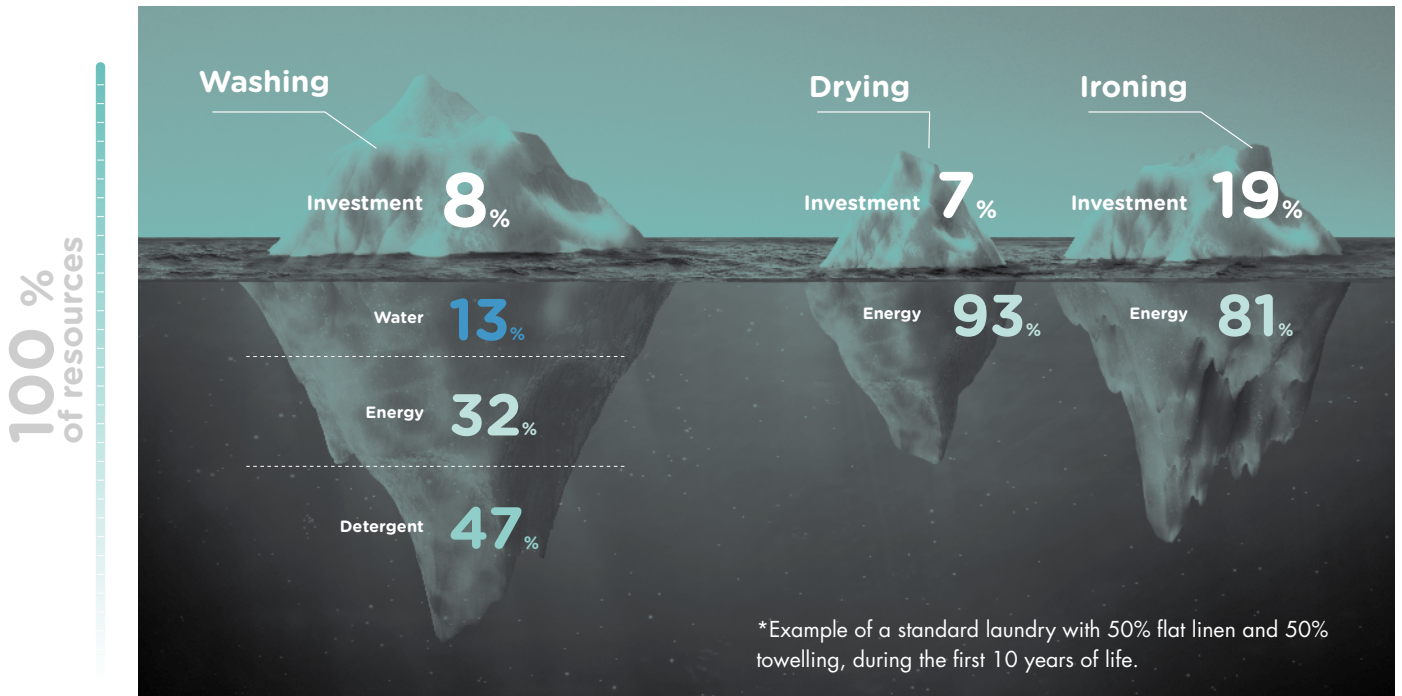


EFFICIENCY

For laundries where process quality and energy and water savings are a priority, the new DANUBE washer extractors offer top performance and a renewed look to meet the needs of the most demanding customers.

Their advanced design has a great effect on energy efficiency and on saving water and chemicals, reducing operating costs and increasing the business productivity.

In a laundry, machinery is the tip of an iceberg. Danube pays a specific attention to the invisible part, to optimize resources throughout the life cycle of machines.



WATCH VIDEO



Energy

Optimizing energy is an essential point in managing a laundry. Our machines have been designed with the objective to achieve greater energy savings.



Water

The saving and good use of water is one of our main objectives so as not to waste it. Our washing machines offer an optimized design and programming as well as a unique accessory, the AQUABAC water recovery tanks to meet this goal.



Chemicals

Our washing machines have been designed with features that facilitate and ensure the most appropriate use of chemicals, providing greater savings and better care of garments.





EFFICIENCY

Water Saving

Possibility of configuring three levels of savings.

Optimal loading (Standard)

Manual indication of load weight to optimize water and chemicals consumption

High G FACTOR 500-450 for high spin machines

Reduced residual moisture. Reduced drying time.

WATCH VIDEO

Low water consumption

Less than 8,2 liters of water per kg and cycle (standard washing cycle 60 °C).

WATCH VIDEO

Intelligent loading (Standard)

Automatic adjustment of water and chemicals consumption.



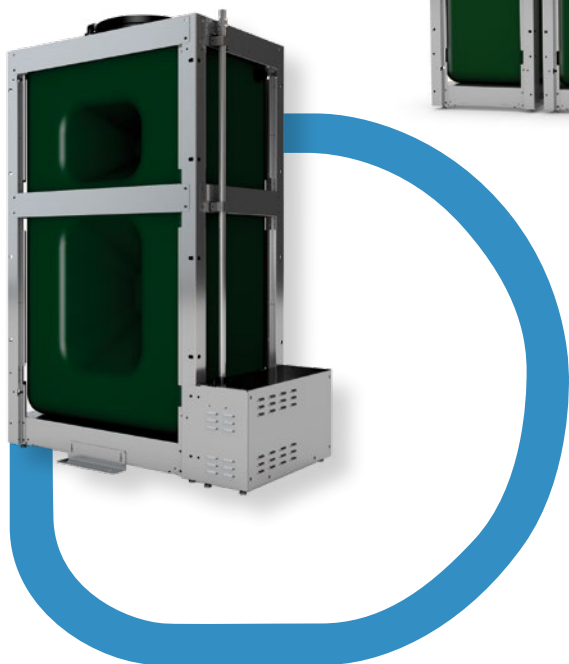


EFFICIENCY

Water recovery tanks ready

DANUBE washer extractors, with ET2 and double drain, can be connected to the new AQUABAC, which allows the water recovery, achieving important water and energy savings.

WATCH VIDEO



AQUABAC XL

New centralized tank for one or more machines, from 1 to 3 tanks of 1.000 liters.

WATCH VIDEO



VERSATILITY

Washer extractors between 11 and 45 kg for high spin models and 11 to 80 kg for normal models can be used for self-service businesses.

Make to order: customization

Possibility to customize machines from factory with available options.

Drain valve < > Pump

Standard model easily transformable.
Easy access and service.

Electric < > Hot water

Standard electric model easily transformable to hot water model.



Wet Cleaning[®]

Thanks to DANUBE constant development, our models are equipped with the features to use WET CLEANING programs:

- ✓ Fully programmable ET2.
- ✓ Total control of temperature and water levels.
- ✓ Programmable washing speed: very low (13 R.P.M.).
- ✓ Rhythm on/off 3seg/40seg.
- ✓ Total control of dosing signal.

Aqua-flow option

Recirculation of the bath water to increase linen care. Increases the flow of water with chemicals, shortens the cycle and improves effectiveness without mechanical action.



OPL < > Coin

Easy transformation from an OPL to a COIN machine.
Three available options:



Coins/Tokens

in machines (washers and dryers): mechanical token, mechanical coiner, electronic coiner

2



DANUBE LAUNDRY payment APP

by means of our App or an external one and Stripe to pay with this device thanks to IoT.

3



External device

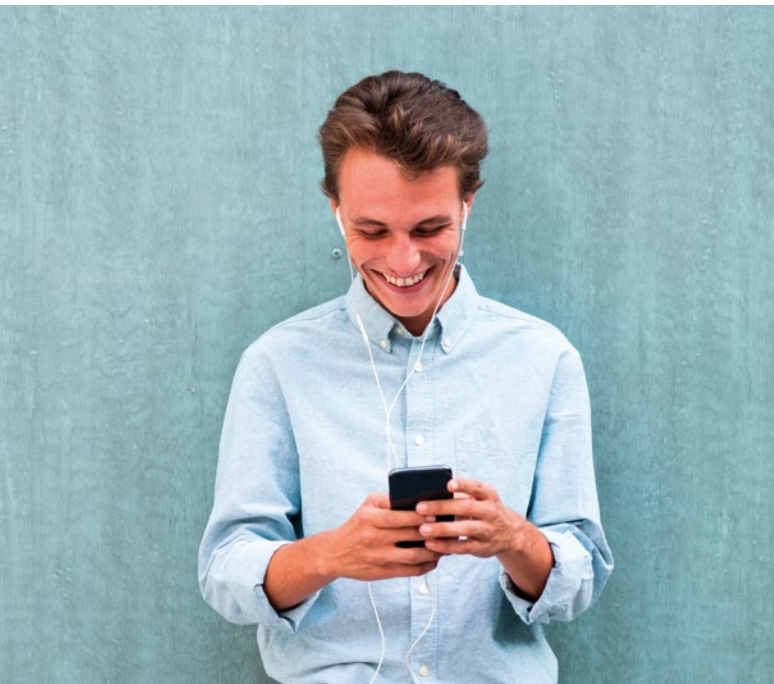
By means of an external device that keeps the communication with the machines. For example, a central pay.

Various connection modes available: by pulses, with RS-485 protocol or via IoT.





CONNECTIVITY A LOT OF ADVANTAGES :



Owners

- ✓ Improves usability, efficiency and comfort.
- ✓ Business control: configurable production reports, cycles, consumption, income, etc...
- ✓ Ensures the washing and drying processes, ensuring hygiene and disinfection, washing quality, etc...

+ information + safety + control



Dealers

- ✓ Technological base for new businesses, renting, maintenance contracts, self-services, etc.
- ✓ Databases of installed machines, geographical distribution, models, etc...
- ✓ Greater added value of Danube machines for the customer.

+ communication + usability + control



Chemical partners

- ✓ Management and creation of washing programs, online and offline.
- ✓ Ensures the washing and drying processes, ensure hygiene and disinfection, washing quality, etc.
- ✓ Troubleshooting and remote management.
- ✓ Telemetry of programs, complete information of all the programs carried out.

+ information + ease + management



Technical service

- ✓ Improvement of customer service.
- ✓ Improved processes, more efficient and lower costs, avoiding unnecessary trips.
- ✓ Remote troubleshooting, maintenance programs.
- ✓ Telemetry of programs, complete information of all the programs carried out.
- ✓ Access to technical documentation, videos, etc.

+ information + support + efficiency





THE INTERNET OF THINGS

STANDARD IN ALL RANGES: Free and easy connection to IoT

The Internet of Things (IoT) is the digital interconnection of everyday objects with internet.

With this in mind, DANUBE machines with EASY TOUCH 2 have been designed using up-to-the-minute technology to connect them to the cloud and obtain a large variety of information.

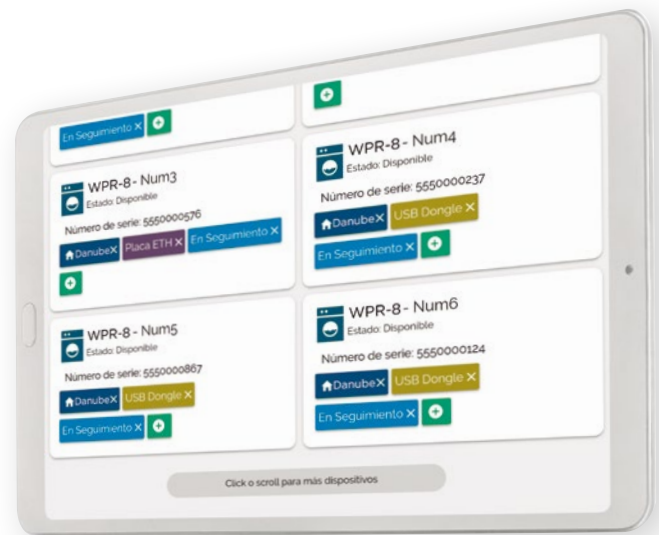
Ready for Ethernet connection.



You will receive current and historical information about the machines, their operation, the current status and much more, so that you can give the best customer support.

+ communication + usability + control

 **DANUBE**
online



Features and functions

- ✔ Service Management of washing and drying programs and phases.
- ✔ Configurable statistics, cycles performed, income (Coin), errors, productions, production reports and water, chemical and energy consumption, workloads, etc...
- ✔ Creation of daily, weekly, etc... reports sent by email with the desired information and statistics.
- ✔ Telemetry: storage and access to all the data and signals from the machines for later use and consultation. (Times, temperatures, errors, water levels, dosages, speeds, etc...). Very useful for users, technical services, chemists, etc...
- ✔ Machine configurations.

Benefits

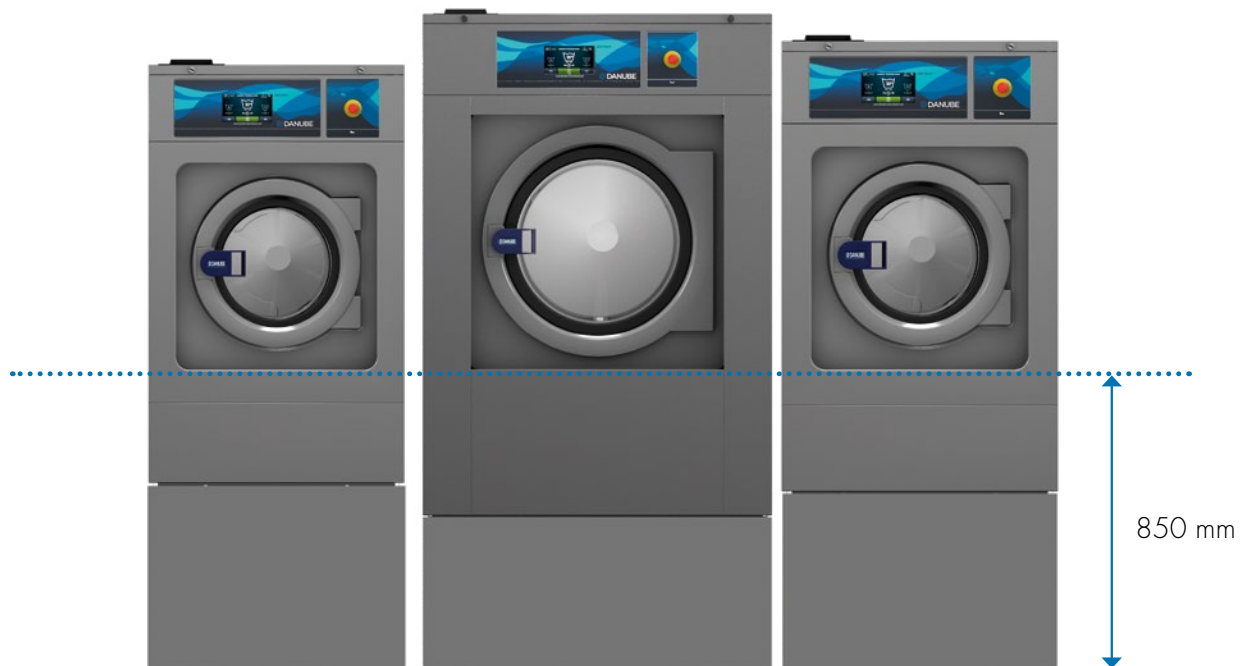
- ✔ Pricing plans for Coin laundry.
- ✔ Remote desktop of the control of the machines.
- ✔ Geolocation.
- ✔ Own payment APP, price plans, promotions, card payment, loyalty plans, business statistics, income control, payment by QR, machine reservation, end of cycle notices, etc...
- ✔ Technical service area:
 - ✔ Access to technical documentation, videos, manuals, exploded views, electrical diagrams, etc.
 - ✔ Configuration of sending notifications and errors.
 - ✔ Management of interventions, reports, reports, notes, etc...





ERGONOMICS

As health and safety at work becomes an important issue, our equipment is designed to make it the most comfortable possible for the user.



Biggest door diameters in the market

Helpful, mainly for big capacity washers, for loading and unloading.

Plinths for models from 11 to 45 kg

Same level of loading .
door = 850 mm.

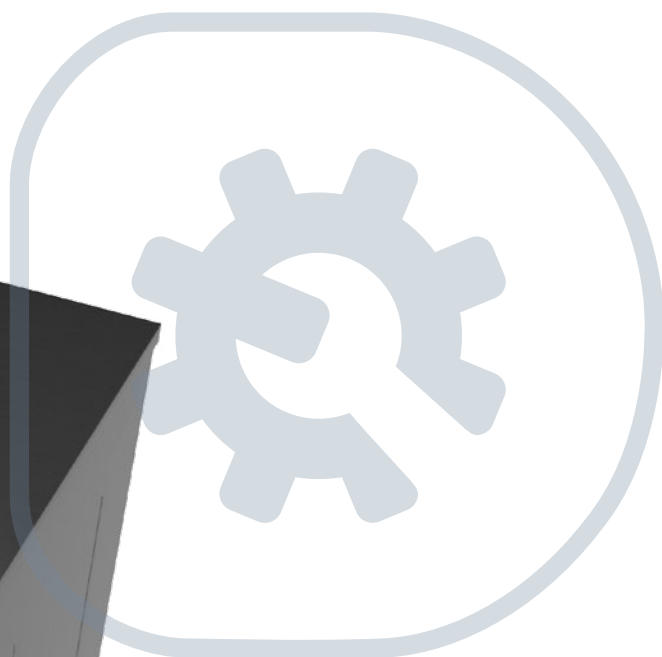
Reversible door

Easy opening/closing system for door lock



EASY MAINTENANCE

One of DANUBE concern is to make life easier for our clients. That includes offering quality equipment and parts of reputed brands, which demand little maintenance.



Same parts

Many key parts are the same for all models (inverter, contactors, electronic elements, gear)

Easy access to parts

Washers are designed to offer an easy maintenance and reparability.

Hinged panel

Easy and ergonomic access to control panel parts.

Technical menu

Statistics, alarms, autotest, data recovery for technicians and maintenance.

BIG LAUNDRY MACHINERY

Machinery with the latest technology, ideal for industrial laundry in all types of sectors and businesses. Washers from 45 to 120 kg and dryers that share the EASY TOUCH 2 touch screen and advanced features.

Industrial dryers

DD-45 to DD-80 ET2.





CONNECTIVITY

All Danube high and normal speed washing machines come equipped with standard Danube Online, which gives you remote access from your mobile or laptop to all the data to analyze and control your machinery and your business.



EFFICIENCY

WED-45C to WED-120C washing machines offer highly advanced features of low water consumption, water and chemical savings, and accessories such as the new AQUABAC XL, which allows centralizing reused water tanks, saving up to 68% of the water in the washing, in addition to saving on chemicals and energy.

AQUABAC XL

WATCH VIDEO

New centralized tank for one or more machines, from 1 to 3 tanks of 1.000 liters.

Industrial washers

WED-45C to WED-120C ET2.



WASHER EXTRACTORS TECHNICAL DATA

	UNIT.	HIGH SPIN										
		WED-11	WED-14	WED-18	WED-22	WED-28	WED-35	WED-45C	WED-60C	WED-80C	WED-100C	WED-120C
DRUM												
Load capacity 1:9 / 1:10	Kg	11/10	14/13	20/18	25/22	31/28	39/35	50/45	65/59	85/77	105/95	130/115
Volume	lt	100	130	180	220	280	350	450	590	770	950	1150
Diameter	mm	532	620	700	700	770	860	860	1048	1048	1360	1360
Depth	mm	425	430	470	560	585	602	720	680	892	637	775
GENERAL DETAILS												
Washing speed / Spining speed	r.p.m.	50/1.300	50/1.204	47/1.133	47/1.071	45/1.024	42,5/966	42,5/966	38/875	38/875	34/678	34/678
Factor G	-	500	500	500	450	450	450	450	450	450	350	350
Noise level	dB	< 70	< 70	< 70	< 70	< 70	< 70	< 70	< 70	< 70	< 70	< 70
Self-service version	-	Yes	Yes	Yes	Yes	Yes	Yes	No	No	No	No	No
Double drainage	-	No	Opt.	Opt.	Opt.	Opt.	Opt.	Opt.	Opt.	Opt.	Opt.	Opt.
Weighing System / Tilting System	-	Opt./No	Opt./No	Opt./No	Opt./No	Opt./No	Opt./No	Opt.	Opt.	Opt.	Opt.	Opt.
Option SLUICE	-	No	No	No	No	No	No	No	No	No	No	No
DOOR												
Height center door / Height base door	mm	630/370	700 / 440	765 / 450	765 / 450	865 / 560	885 / 540	885 / 540	1170 / 810	1170 / 810	1.330 / 900	1.330 / 900
Diameter	mm	373	373	460	460	460	560	560	560	560	700	700
POWER												
Motor	kW	0,75	1,1	2,2	2,2	4	6	6	15	15	15	15
Heating (Electric model)	kW	6	9	12	12	18	21	21	36	48	-	-
Max. power (Electric model)	kW	6,25	9,4	12,75	12,75	19,2	22	22	39	51	-	-
Max. power Steam model (and hot water)	kW	0,75	1,1	2,2	2,2	4	6	6	15	15	15	15
CONNECTIONS												
Steam inlet	inch	1/2"	1/2"	1/2"	1/2"	3/4"	3/4"	3/4"	3/4"	3/4"	1-1/4"	1-1/4"
Water inlet	inch	3/4"	3/4"	3/4"	3/4"	3/4"	3/4"	3/4"	1"	1"	1-1/2"	1-1/2"
Drain	mm / inch	3"	3"	3"	3"	3"	3"	3"	3"	3"	4"	4"
DIMENSIONS / PACKING DIMENSIONS												
Net width / Gross width	mm	692 / 730	788 / 830	884 / 945	884 / 945	979 / 1.040	1.095 / 1.165	1.095 / 1.195	1.420 / 1.600	1.420 / 1.600	1.836 / 1.900	1.836 / 1.900
Net depth / Gross depth	mm	788 / 1.000	869 / 1.010	913 / 1.030	1.003 / 1.140	1.070 / 1.210	1.184 / 1.230	1.304 / 1.440	1.433 / 1.595	1.645 / 1.805	1.649 / 2.030	1.832 / 2.030
Net height / Gross height	mm	1.185 / 1.417	1.307 / 1.560	1.415 / 1.700	1.415 / 1.700	1.553 / 1.850	1.598 / 1.920	1.598 / 1.920	1.880 / 1.930	1.880 / 1.930	2.245 / 2.290	2.245 / 2.290
Net weight / Gross weight	kg	230 / 239	250 / 283	360 / 393	380/413	540 / 595	750 / 820	770 / 840	1.650 / 1.800	1.800 / 2.000	3.950 / 4.100	3.950 / 4.100
Volume	m ³	1,03	1,31	1,63	1,83	2,33	2,75	3,3	4,9	5,6	8,83	8,83

	UNIT.	NORMAL SPIN								
		WEN-11	WEN-14	WEN-18	WEN-22	WEN-28	WEN-35C	WEN-45C	WEN-60C	WEN-80C
DRUM										
Load capacity 1:9 / 1:10	Kg	11/10	14/13	20/18	25/22	31/28	39/35	49/45	66/60	88/80
Volume	lit	100	130	180	220	280	350	450	600	800
Diameter	mm	620	620	700	700	770	860	860	1048	1048
Depth	mm	330	430	470	570	585	602	720	684	936
GENERAL DETAILS										
Washing speed / Spining speed	r.p.m.	53/759	53/759	50/714	50/714	48/682	45/644	45/644	42,5/505	42,5/505
Factor G	-	200	200	200	200	200	200	200	150	150
Noise level	dB	< 70	< 70	< 70	< 70	< 70	< 70	< 70	< 70	< 70
Self-service version	-	Yes	Yes	Yes	Yes	Yes	Yes	Yes	Yes	Yes
Double drainage	-	No	Opt.	Opt.	Opt.	Opt.	Opt.	Opt.	Opt.	Opt.
Weighing System / Tilting System	-	No	No	No	No	No	No	No	No	No
Option SLUICE	-	Yes	Yes	Yes	Yes	Yes	Yes	Yes	No	No
DOOR										
Height center door / Height base door	mm	570 / 310	570 / 310	655 / 348	655 / 348	700 / 400	735 / 440	735 / 440	900 / 540	900 / 540
Diameter	mm	373	373	460	460	460	560	560	560	560
POWER										
Motor	kW	1,1	1,1	2,2	2,2	4	4	6	5,5	7,5
Heating (Electric model)	kW	6	9	12	12	18	21	21	36	48
Max. power (Electric model)	kW	6,25	9,5	12,75	12,75	19,2	22	22	41.5	53.5
Max. power Steam model and hot water)	kW	1,1	1,1	2,2	2,2	4	4	4	5,5	7,5
CONNECTIONS										
Steam inlet	inch	1/2"	1/2"	1/2"	1/2"	3/4"	3/4"	3/4"	3/4"	3/4"
Water inlet	inch	3/4"	3/4"	3/4"	3/4"	3/4"	3/4"	3/4"	1"	1"
Drain	mm/ inch	3"	3"	3"	3"	3"	3"	3"	3"	3"
DIMENSIONS / PACKING DIMENSIONS										
Net width / Gross width	mm	719 / 800	719 / 800	788 / 880	788 / 880	884 / 930	979 / 1.050	979 / 1.050	1.225 / 1.335	1.225 / 1.335
Net depth / Gross depth	mm	684 / 990	830 / 990	840 / 1.040	950 / 1.140	1.070 / 1.260	1.066 / 1.250	1.255 / 1.440	1.279 / 1.440	1.492 / 1.660
Net height / Gross height	mm	1.158 / 1.350	1.158 / 1.350	1.307 / 1.500	1.307 / 1.500	1.340 / 1.523	1.411 / 1.600	1.411 / 1.640	1.640 / 1.860	1.640 / 1.860
Net weight / Gross weight	kg	217 / 225	239 / 247	281 / 301	300/320	365 / 395	473 / 503	600 / 670	930 / 1.050	1.000 / 1.120
Volume	m ³	1,07	1,07	1,3	1,5	1,8	2,1	2,5	3,73	4,12

DANUBE reserves the right to modify the technical data without notice.