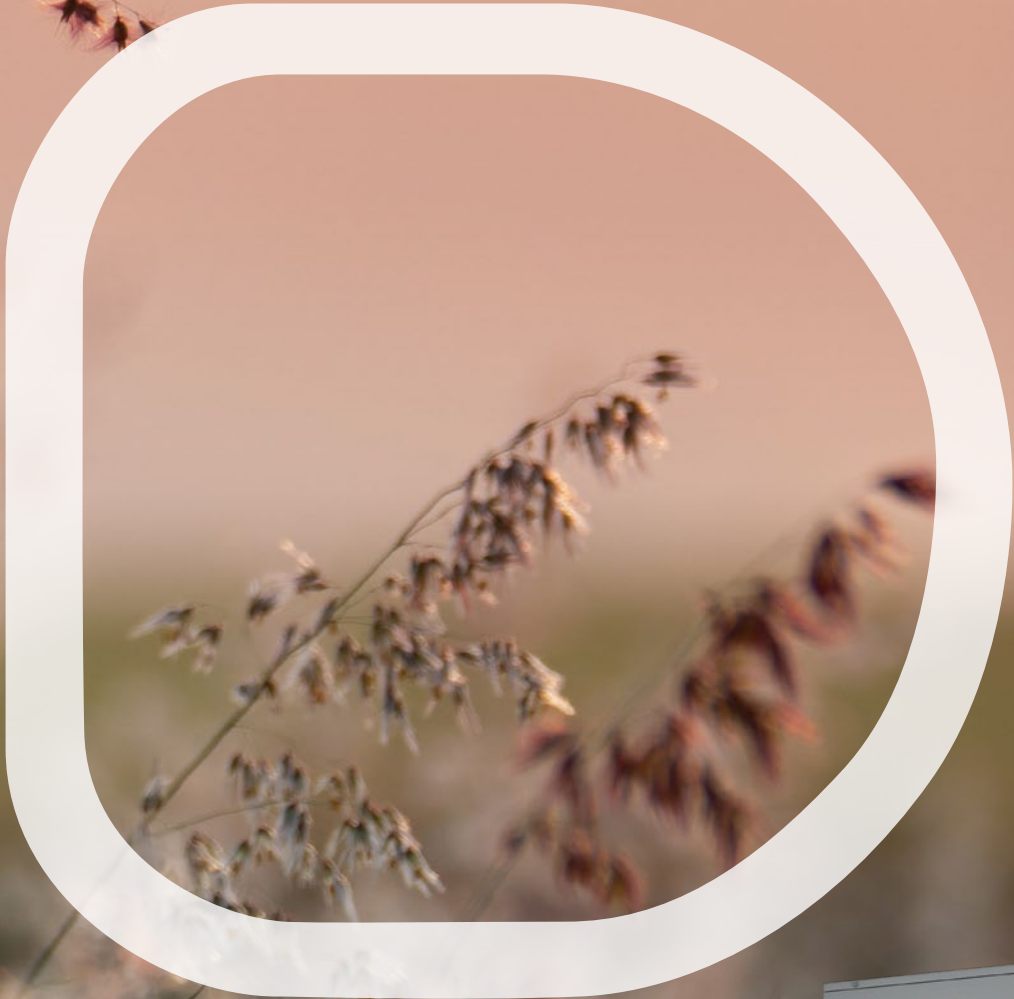


# TUMBLE DRYERS

INTERACTIVE CATALOGUE



# WE THINK GREEN, WE THINK DANUBE

Our industrial dryers offer a wide range of capacities from 11 to 80 kg and several ranges to meet all the needs.

All the GOLD and SILVER ranges are equipped with the ET2 control with a 7" touch screen and offer Danube Online communication as standard for an easy and free connection to IoT.

The most efficient range GOLD comes with all the options combining performance and high energy savings : CARE DRY to control humidity, AIR RECYCLE, OPTIMAL FLOW and insulated panels.

the SILVER range is very versatile and can be adapted to all kind of needs thanks to a lot of options available.

The BRONZE and BASIC ranges are equipped with the EM electronic control, easy to use.

Our new range of heat pump dryers also includes the best features from the GOLD range and achieve the best energy savings.

At last, new capacities have been added to our stack dryers with double drum.



# RANGE OF MODELS

## SINGLE POCKET

### DD-GOLD ET2

CONTROL TYPE	HEATING	CAPACITY								
		11-12 kg	14-15 kg	17-18 kg	22-24 kg	28-31 kg	33-37 kg	45-50 kg	60-67 kg	75-83 kg
EASY TOUCH 2 microprocessor	Electric, gas or steam	DD-11 ET2	DD-14 ET2	DD-18 ET2	DD-22 ET2	DD-28 ET2	DD-35 ET2	DD-45 ET2	DD-60 ET2	DD-80 ET2

### DD-SILVER ET2

CONTROL TYPE	HEATING	CAPACITY								
		11-12 kg	14-15 kg	17-18 kg	22-24 kg	28-31 kg	33-37 kg	45-50 kg	60-67 kg	75-83 kg
EASY TOUCH 2 microprocessor	Electric, gas or steam	DD-11 ET2	DD-14 ET2	DD-18 ET2	DD-22 ET2	DD-28 ET2	DD-35 ET2	DD-45 ET2	DD-60 ET2	DD-80 ET2

### DD-BRONZE EM

CONTROL TYPE	HEATING	CAPACITY								
		11-12 kg	14-15 kg	17-18 kg	22-24 kg	28-31 kg	33-37 kg	45-50 kg	60-67 kg	75-83 kg
EM Electronic control	Electric, gas or steam	DD-11 EM	DD-14 EM	DD-18 EM	DD-22 EM	DD-28 EM	DD-35 EM	DD-45 EM	DD-60 EM	DD-80 EM

### DD-BASIC EM

CONTROL TYPE	HEATING	CAPACITY					
		11-12 kg	14-15 kg	17-18 kg	22-24 kg	28-31 kg	33-37 kg
EM Electronic control	Electric or gas	DD-11 EM	DD-14 EM	DD-18 EM	DD-22 EM	DD-28 EM	DD-35 EM

## DOUBLE POCKET

### STD-SILVER ET2

CONTROL TYPE	HEATING	CAPACITY				
		11-12 kg	14-15 kg	17-18 kg	17-18 kg (Gas only)	22-24 kg (Gas only)
EASY TOUCH 2 microprocessor	Electric or gas	STD-11	STD-14 <b>NEW</b>	STD-18	STD-18 PLUS	STD-22 <b>NEW</b>

### STD-BRONZE EM

CONTROL TYPE	HEATING	CAPACITY				
		11-12 kg	14-15 kg	17-18 kg	17-18 kg (Gas only)	22-24 kg (Gas only)
EM electronic control	Electric or gas	STD-11	STD-14 <b>NEW</b>	STD-18	STD-18 PLUS	STD-22 <b>NEW</b>

### STD-BASIC EM

CONTROL TYPE	HEATING	CAPACITY				
		11-12 kg	14-15 kg	17-18 kg	17-18 kg (Gas only)	22-24 kg (Gas only)
EM electronic control	Electric or gas	STD-11	STD-14 <b>NEW</b>	STD-18	STD-18 PLUS	STD-22 <b>NEW</b>

## HEAT PUMP **NEW RANGE**

### HPI-GOLD ET2

CONTROL TYPE	HEATING	CAPACITY			
		11-12 kg	14-15 kg	17-18 kg	22-24 kg
EASY TOUCH 2 microprocessor	Heat pump	DD-11 ET2 <b>NEW</b>	DD-14 ET2 <b>NEW</b>	DD-18 ET2 <b>NEW</b>	DD-22 ET2 <b>NEW</b>

# SINGLE POCKET

## GOLD



THE MOST EFFICIENT

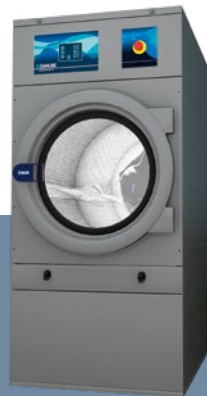
- ✓ AIR RECYCLE: air recovery system.
- ✓ CARE DRY : intelligent humidity control.
- ✓ INSULATED PANELS: complete airflow circuit.
- ✓ OPTIMAL FLOW: optimized double airflow.
- ✓ DOUBLE DOOR GLASS.
- ✓ SPRINKLER: incorporated fire extinguishing system.
- ✓ ET2 control with 7" coloured touch screen.
- ✓ **Danube Online communication - standard IoT connectivity.**
- ✓ Skinplate outer casing, stainless steel look.
- ✓ Big loading door (180° opening).
- ✓ REVERSING DRUM standard.
- ✓ STAINLESS STEEL DRUM standard.
- ✓ SOFT DRY: drum stamped holes.
- ✓ FILTER DRAWER: wide surface and improved airflow.
- ✓ COOL DOWN: anti-wrinkle.
- ✓ Electric, gas or steam heating.
- ✓ OPTIONS  
Perfume dosing/spraying.

## SILVER



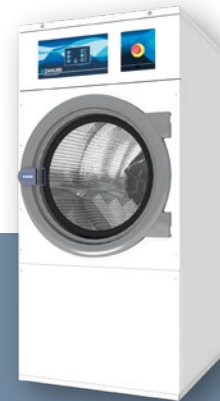
- ✓ ET2 control with 7" coloured touch screen.
- ✓ **Danube Online communication - standard IoT connectivity.**
- ✓ Skinplate outer casing, stainless steel look.
- ✓ Big loading door (180° opening).
- ✓ DOUBLE AIRFLOW: axial and radial.
- ✓ REVERSING DRUM standard.
- ✓ STAINLESS STEEL DRUM standard.
- ✓ SOFT DRY: drum stamped holes.
- ✓ FILTER DRAWER: wide surface and improved airflow.
- ✓ COOL DOWN: anti-wrinkle.
- ✓ Electric, gas or steam heating.
- ✓ OPTIONS  
CARE DRY: intelligent humidity control.  
SPRINKLER: fire extinguishing system  
Double door glass.  
Perfume dosing/spraying...

## BRONZE



- ✓ EM electronic programmer: selection of time and temperature.
- ✓ Skinplate outer casing, stainless steel look.
- ✓ Big loading door (180° opening).
- ✓ DOUBLE AIRFLOW: axial and radial.
- ✓ REVERSING DRUM standard.
- ✓ STAINLESS STEEL DRUM standard.
- ✓ SOFT DRY: drum stamped holes.
- ✓ FILTER DRAWER: wide surface and improved airflow.
- ✓ COOL DOWN: anti-wrinkle.
- ✓ Electric, gas or steam heating.
- ✓ OPTIONS  
Display for EM programmer.  
Double door glass...

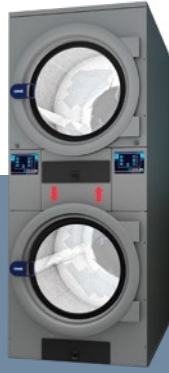
## BASIC



- ✓ EM electronic programmer: selection of time and temperature.
- ✓ White lacquered outer casing.
- ✓ Big loading door (180° opening).
- ✓ Axial airflow.
- ✓ REVERSING DRUM standard.
- ✓ Galvanized drum.
- ✓ COOL DOWN: anti-wrinkle.
- ✓ Electric or gas heating.
- ✓ OPTIONS  
Display for EM programmer.

## DOUBLE POCKET STD

### SILVER



- ✔ ET2 control with 7" coloured touch screen.
- ✔ **Danube Online communication - standard IoT connectivity.**
- ✔ Skinplate outer casing, stainless steel look.
- ✔ Big loading door (180° opening).
- ✔ DOUBLE AIRFLOW: axial and radial.
- ✔ REVERSING DRUM standard.
- ✔ STAINLESS STEEL DRUM standard.
- ✔ SOFT DRY: drum stamped holes.
- ✔ FILTER DRAWER: wide surface and improved airflow.
- ✔ COOL DOWN: anti-wrinkle.
- ✔ Electric or gas heating.
- ✔ Model STD-PLUS, gas heated, more powerful for more productivity.
- ✔ OPTIONS
  - CARE DRY: intelligent humidity control.
  - SPRINKLER: fire extinguishing system.
  - Double door glass...

## HEAT PUMP

NEW RANGE

### GOLD



- ✔ Heat pump dryer: no need of a fume exhaust to the outside.
- ✔ CARE DRY : intelligent humidity control.
- ✔ INSULATED PANELS: complete airflow circuit.
- ✔ DOUBLE DOOR GLASS.
- ✔ ET2 control with 7" coloured touch screen.
- ✔ **Danube Online communication - standard IoT connectivity.**
- ✔ Skinplate outer casing, stainless steel look.
- ✔ Big loading door (180° opening).
- ✔ REVERSING DRUM standard.
- ✔ STAINLESS STEEL DRUM standard.
- ✔ SOFT DRY: drum stamped holes.
- ✔ FILTER DRAWER: wide surface and improved airflow.
- ✔ COOL DOWN: anti-wrinkle.

### BRONZE

- ✔ EM electronic programmer: selection of time and temperature.
- ✔ Skinplate outer casing, stainless steel look.
- ✔ Big loading door (180° opening).
- ✔ DOUBLE AIRFLOW: axial and radial.
- ✔ REVERSING DRUM standard.
- ✔ STAINLESS STEEL DRUM standard.
- ✔ SOFT DRY: drum stamped holes.
- ✔ FILTER DRAWER: wide surface and improved airflow.
- ✔ COOL DOWN: anti-wrinkle.
- ✔ Electric or gas heating.
- ✔ Model STD-PLUS, gas heated, more powerful for more productivity.
- ✔ OPTIONS
  - Display for EM programmer.
  - Double door glass...

### BASIC

- ✔ EM electronic programmer: selection of time and temperature.
- ✔ White lacquered outer casing.
- ✔ Big loading door (180° opening).
- ✔ Axial airflow.
- ✔ REVERSING DRUM standard.
- ✔ Galvanized drum.
- ✔ COOL DOWN: anti-wrinkle.
- ✔ Electric or gas heating.
- ✔ Model STD-PLUS, gas heated, more powerful for more productivity.
- ✔ OPTIONS
  - Display for EM programmer.

# THE HIGHEST ACHIEVING ONE ON THE MARKET

## HIGH PERFORMANCE



### EASY TOUCH 2

- User friendly and totally programmable. microprocessor with a 7" **touch screen**.
- **USB Connection**. Free software online for programming, telemetry, data analysis...
- **Danube Online communication standard - free and easy connection to IoT**.
- **Videos shown on display**: ads, instructions. (useful for coin laundry).
- **Optional:**  
**Dosing/vaporizing system** (softeners/perfumes).



### FEATURES

- Stainless steel drum as standard (Except Basic).
- Reversing drum action as standard.
- Frequency inverter as standard.
- SOFT DRY as standard (except BASIC).



### VERSATILITY

- **MAKE TO ORDER** : New possibility to customize the machines from factory with the available options.
- **WET CLEANING** : Possibility to create different phases per program with its customized parameters.
- **OPL <=> COIN** : Standard OPL model easily transformable for Self Service laundry uses.
- **CARE DRY** intelligent humidity control (standard in GOLD and HP).



### EASY MAINTENANCE

- **Hinged panel**: Easy and ergonomic access to control panel parts.
- **Easy access to parts for reparability**: Dryers are designed to offer an easier maintenance and repair (Example: rear panel in big capacity dryer).
- **Technical menu**: Machine monitoring, machine error warning, management for telemetry and statistics. Remote desk and data recovery for technicians and maintenance, software update, etc.



## ERGONOMICS

- **Drawer as fluff filter, made of stainless steel (except Basic).**
- **Big door diameters** Helpful for loading and unloading.
- **Ideal door height for ergonomic opening.**
- **Opening sense of door adjustable on site** (models 11 to 35 kg).  
Opening sense can be changed just turning the front panel and adding a part (longer wire to be ordered).
- **Reversible door can be ordered for all dryers, factory fitted.**
- **Guillotine door for models from 45 to 60 kg as new option.**



## CONNECTIVITY

- **Danube Online - IoT connectivity standard:** machine monitoring, error warning, remote desk and data recovery for technicians and maintenance, software updates...
- **Management of OPL or coin-operated laundries:** Danube IoT solution allows you to manage your laundry business (create discount programs, get statistics, telemetry, laundry monitoring...).
- **Remote payment:** App for payment, cashless payment by scanning a QR code, promotions and machine booking.



## EFFICIENCY

- **CARE DRY** intelligent humidity control with new drum inlet temperature control.
- **AIR RE-CYCLE.** Efficient air recirculation system. Short drying times, less energy consumption.
- **OPTIMAL FLOW.** New "optimized" system of mixed airflow (Gold version).
- **DOUBLE FLOW.** Axial radial airflow.
- **Big fluff filter.**
- **Thermal insulation.**



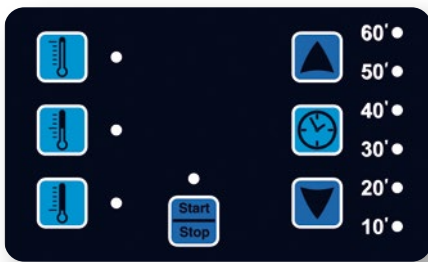


# EASY TOUCH 2

## EM

### Electronic control:

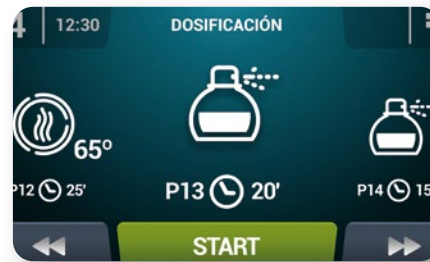
Push buttons to control temperature and time.  
Simple and user friendly.  
Programmable with external console (optional).  
Display as option.



## Touch Screen 7"

Coloured touch screen:  
Wide 7" screen on all the models with ET2.  
Fully programmable: 20 preset programs and possibility to create infinite more.

### Dosing/ vaporizing system



## IoT - Danube Online

Offers feedback from the machines to the device through the cloud, about telemetry and statistics to be analyzed and to ensure **maximum hygiene**.







### 37 languages

Available and easy to configurate, thanks to DANUBE aim to be accessible to everyone.

### Advertisements shown on display

Very useful for Self-service.



### USB connection

Free software online for programming, telemetry, data analysis...





# EFFICIENCY

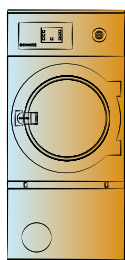
The GOLD range dryers and the new HPi range offer as standard a wide variety of efficient features to achieve significant energy savings.

## THE MOST EFFICIENT RANGES

WATCH VIDEO

### Insulated panels and double door glass

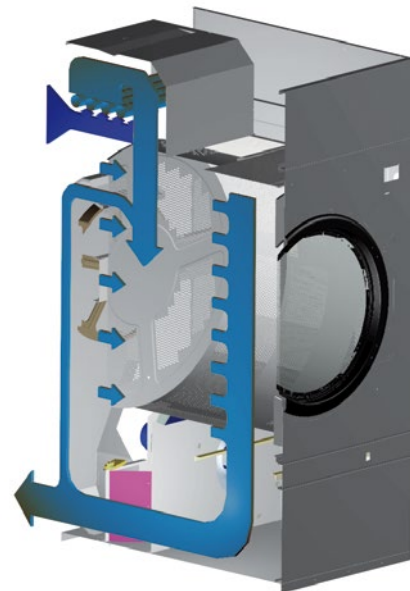
Insulated panels to avoid loss of heat.



THERMAL INSULATION



NO THERMAL INSULATION



### Air recirculation system

Efficient air recovery system. Short drying times, less energy consumption.

### Optimal Flow

Optimized mixed airflow system in GOLD range.



### Care Dry

WATCH VIDEO

Intelligent humidity control (standard in GOLD and HPi, optional in SILVER).

In a laundry, machinery is the tip of an iceberg. Danube pays a specific attention to the invisible part, to optimize resources throughout the life cycle of machines.

WATCH VIDEO

### Temperature probe at drum inlet

A more accurate temperature control in the drum.

### Double Flow

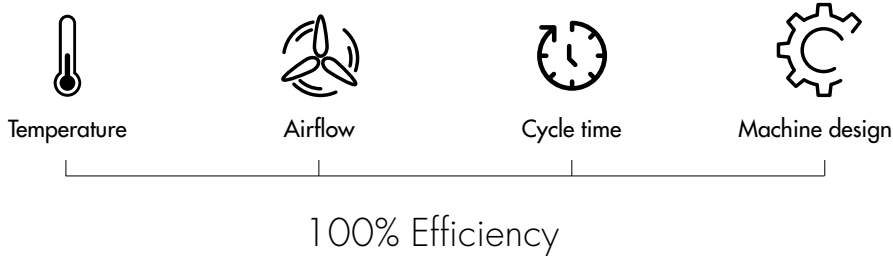
Axial-radial airflow in GOLD, SILVER, BRONZE and HPi.

100 % of resources



\*Example of a standard laundry with 50% flat linen and 50% towelling, during the first 10 years of life.

HEAT PUMP  
THE NEW DANUBE RANGE OF HEAT PUMP DRYER  
WITH THE HIGHEST EFFICIENCY



WATCH VIDEO



**Less power installed**

A heat pump dryer uses 1/5 of the power in kW consumed by an electric model of the same capacity.

**Efficient**

A heat pump dryer uses 0,5 kW/liters of evaporated water.

**Optimized cycle time**

Full load of cotton clothes with 45 % of residual moisture.

Industrial HPi dryer —> 63 minutes

ELECTRIC DRYER	HEAT PUMP DRYER	DIRECT SAVING
18 kW	3,95 kW	



# VERSATILITY

Tumble dryers between 11 and 35 kg are specially designed for coin sector.

## Make to order: customization

Possibility to customize a dryer from factory with various available options.



## Wet Cleaning<sup>®</sup>

Our dryers have all the features to use the wet cleaning system.

- ✓ Fully programmable control: possibility to program by phases.
- ✓ Accurate control of in and out temperatures.
- ✓ Precise humidity programming.
- ✓ Adjustable drum speed.

## Care Dry

Intelligent humidity control which automatically adapts the rotative speed of the drum to the level of moisture detected in each phase of drying (standard on GOLD and HPI, optional on SILVER).

# OPL < > Coin

Easy transformation from an OPL to a COIN machine.  
Three available options:



## Coins/Tokens

in machines (washers and dryers): mechanical token, mechanical coiner, electronic coiner.

2



## DANUBE LAUNDRY payment APP

through our app or any other external app and Stripe to pay with a mobile device using IoT.



## External device

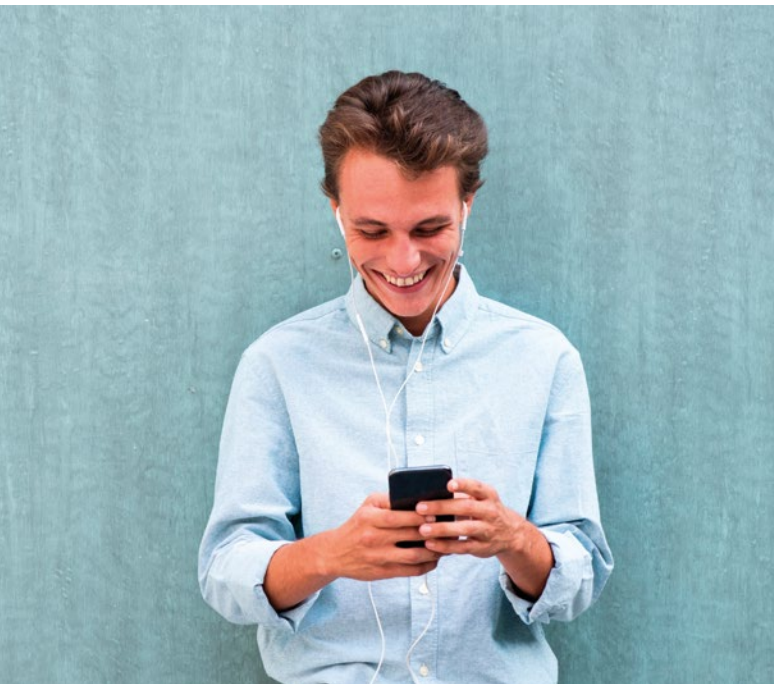
By means of an external device that keeps the communication with the machines. For example, a central pay.

Various connection modes available: by pulses, with RS-485 protocol or via IoT.





# CONNECTIVITY A LOT OF ADVANTAGES :



## Owners

- ✓ Improves usability, efficiency and comfort.
- ✓ Business control: configurable production reports, cycles, consumption, income, etc...
- ✓ Ensures the washing and drying processes, ensuring hygiene and disinfection, washing quality, etc...

**+ information + safety + control**



## Dealers

- ✓ Technological base for new businesses, renting, maintenance contracts, self-services, etc.
- ✓ Databases of installed machines, geographical distribution, models, etc...
- ✓ Greater added value of Danube machines for the customer.

**+ communication + usability + control**



## Chemical partners

- ✓ Management and creation of washing programs, online and offline.
- ✓ Ensures the washing and drying processes, ensure hygiene and disinfection, washing quality, etc.
- ✓ Troubleshooting and remote management.
- ✓ Telemetry of programs, complete information of all the programs carried out.

**+ information + ease + management**



## Technical service

- ✓ Improvement of customer service.
- ✓ Improved processes, more efficient and lower costs, avoiding unnecessary trips.
- ✓ Remote troubleshooting, maintenance programs.
- ✓ Telemetry of programs, complete information of all the programs carried out.
- ✓ Access to technical documentation, videos, etc.

**+ information + support + efficiency**





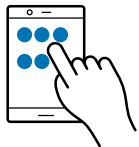
# THE INTERNET OF THINGS

## STANDARD IN ALL RANGES: Free and easy connection to IoT

The Internet of Things (IoT) is the digital interconnection of everyday objects with internet.

With this in mind, DANUBE machines with EASY TOUCH 2 have been designed using up-to-the-minute technology to connect them to the cloud and obtain a large variety of information.

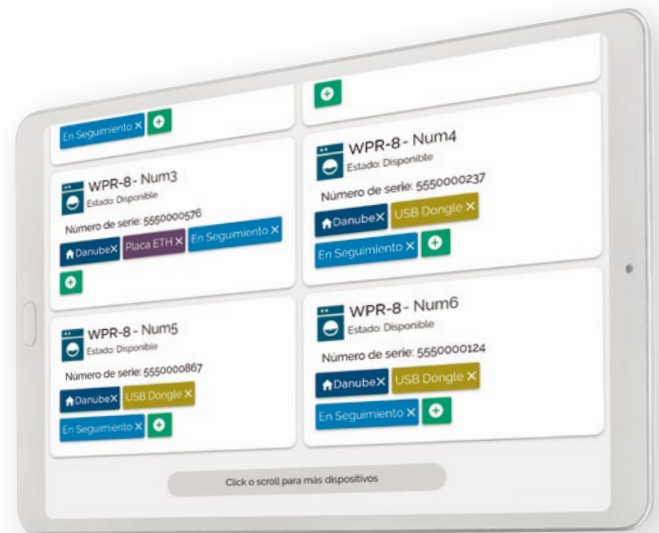
Ready for Ethernet connection.



You will receive current and historical information about the machines, their operation, the current status and much more, so that you can give the best customer support.

**+ communication + usability + control**

 **DANUBE**  
online



## Features and functions

- ✓ Service Management of washing and drying programs and phases.
- ✓ Configurable statistics, cycles performed, income (Coin), errors, productions, production reports and water, chemical and energy consumption, workloads, etc...
- ✓ Creation of daily, weekly, etc... reports sent by email with the desired information and statistics.
- ✓ Telemetry: storage and access to all the data and signals from the machines for later use and consultation. (Times, temperatures, errors, water levels, dosages, speeds, etc...). Very useful for users, technical services, chemists, etc...
- ✓ Machine configurations.

## Benefits

- ✓ Pricing plans for Coin laundry.
- ✓ Remote desktop of the control of the machines.
- ✓ Geolocation.
- ✓ Own payment APP, price plans, promotions, card payment, loyalty plans, business statistics, income control, payment by QR, machine reservation, end of cycle notices, etc...
- ✓ Technical service area:
  - ✓ Access to technical documentation, videos, manuals, exploded views, electrical diagrams, etc.
  - ✓ Configuration of sending notifications and errors.
  - ✓ Management of interventions, reports, reports, notes, etc...





# ERGONOMICS

Designed to be as comfortable as possible for the user.



## Opening sense of door adjustable on site

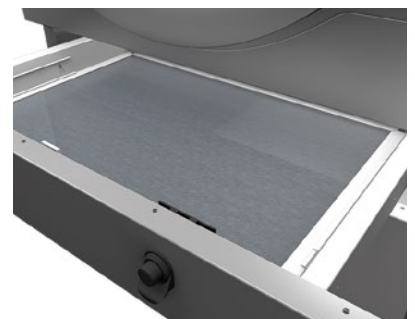
Opening sense can be easily changed in models 11 to 35 kg. It can also be ordered from factory.

## Biggest door diameters

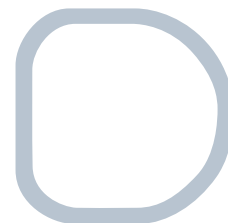
Helpful for loading and unloading.

## Big fluff filter

Drawer with stainless steel grid, easy to open and clean.







**NEW**

## Front tilting system

on 45 to 80 kg models.



**NEW**

## Guillotine door for a better loading and unloading

(option for automatic and option for manual operation) NEW for 45 to 80 kg models.



# FEATURES

All dryers ranges are equipped with important features as standard.

## **Stainless steel drum**

As standard (Galvanized steel on BASIC only).

## **Reversing drum action**

As standard.

## **Frequency inverter**

As standard.

## **Soft dry**

drum perforations with stamped holes (not in BASIC).





# EASY MAINTENANCE

Offering quality equipment and parts of reputed brands, which demand little maintenance.

## Easy access to parts

Dryers are designed to offer an easy maintenance and reparability.

## Same parts

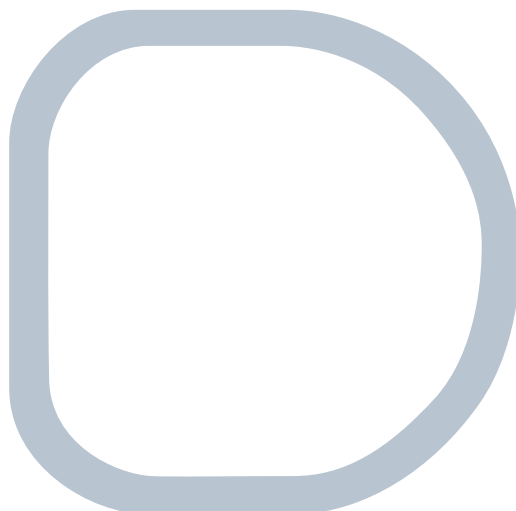
Many key parts are the same for all models (inverter, contactors, electronic elements, gear).

## Technical menu

Statistics, alarms, autotest, data recovery for technicians and maintenance.

## Hinged panel

Easy and ergonomic access to control panel parts.



# BIG LAUNDRY MACHINERY

Machinery with the latest technology, ideal for industrial laundry in all types of sectors and businesses. Washers from 45 to 120 kg and dryers that share the EASY TOUCH 2 touch screen and advanced features.

## Industrial dryers

DD-45 to DD-80 ET2.





## CONNECTIVITY

All Danube high and normal speed washing machines come equipped with standard Danube Online, which gives you remote access from your mobile or laptop to all the data to analyze and control your machinery and your business.



## EFFICIENCY

WED-45C to WED-120C washing machines offer highly advanced features of low water consumption, water and chemical savings, and accessories such as the new AQUABAC XL, which allows centralizing reused water tanks, saving up to 68% of the water in the washing, in addition to saving on chemicals and energy.

### AQUABAC XL

New centralized tank for one or more machines, from 1 to 3 tanks of 1.000 liters.

### Industrial washers

WED-45C to WED-120C ET2.



# TUMBLE DRYERS TECHNICAL DATA

	UNIT.	DD-11	DD-14	DD-18	DD-22	DD-28	DD-35	DD-45	DD-60	DD-80
<b>MODEL</b>										
Capacity 1/18	Kg	11,7	15	18,3	24,3	30,5	36,6	49,8	66,8	83,3
Capacity 1/20	Kg	10,5	13,5	16,5	21,9	27,5	33	44,8	60,1	75
Hourly Output GOLD*	Kg/h	31,3	32,5	33,6	44,6	61,10	73,3	96	144	187,5
Hourly Output SILVER-BRONZE-BASIC*	Kg/h	28,6	30,3	31,9	40	59,3	63,9	84,4	128,6	173,1
Evaporation capacity GOLD*	l/h	15	15,6	16,3	22,3	31,8	34,7	48	72	93,8
Evaporation capacity SILVER-BRONZE-BASIC*	l/h	14,5	15,4	16,3	20	30,9	32,1	42,5	65,8	86,5
<b>DRUM</b>										
Ø Drum	mm	750	750	750	835	947	947	1225	1225	1225
Ø Door	mm	574	574	574	574	802	802	802	802	802
Door center height	mm	976	976	976	1030	1040	1040	1275	1275	1275
Load hole bottom height	mm	689	689	689	743	640	640	874	874	874
Drum length	mm	475	610	746	800	780	936	760	1020	1252
Drum volume	l	210	269	330	438	549	659	896	1202	1500
<b>POWER</b>										
Drum motor power	KW	0,37	0,37	0,37	0,37	0,55	0,55	0,75	1,1	1,5
Fan Motor Power GOLD	KW	0,55	0,55	0,55	0,75	0,75	0,75	2,2	2,2	2,2
Fan Motor Power SILVER-BRONZE-BASIC	KW	0,25	0,25	0,25	0,55	0,55	0,55	1,1	1,1	1,1
Electric heating power ALL RANGES	KW	12	18	18	24	30	36	54	72	72
Total elec. power (elec. mod.) GOLD	KW	12,97	18,97	18,97	25,17	31,35	37,35	57	75,35	75,75
Total elec. power (elec. mod.) SILVER-BRONZE-BASIC	KW	12,67	18,67	18,67	24,97	31,15	37,15	55,9	74,25	74,65
Gas heating power ALL RANGES	KW	20,51	20,51	20,51	31	41	41	60	90	120
Total elec. power (gas mod.) GOLD	KW	0,97	0,97	0,97	1,17	1,35	1,35	3	3,35	3,75
Total elec. power (gas mod.) SILVER-BRONZE-BASIC	KW	0,67	0,67	0,67	0,97	1,15	1,15	1,9	2,25	2,65
Steam heating power ALL RANGES	KW	30	30	30	49,2	50,1	50,1	91,3	128	128
Total elec. power (steam mod.) GOLD	KW	0,97	0,97	0,97	1,17	1,35	1,35	3	3,35	3,75
Total elec. power (steam mod.) SILVER-BRONZE-BASIC	KW	0,67	0,67	0,67	0,97	1,15	1,15	1,9	2,25	2,65
<b>DIMENSIONS</b>										
Net dimensions (W x D x H)	mm	785x855x1694	785x989x1694	785x1125x1694	890x1255x1812	985x1054x1975	985x1210x1975	1270x1106x2380	1270x1366x2380	1270x1598x2380
Gross dimensions (W x D x H)	mm	865x940x1840	865x1074x1840	865x1210x1840	970x1345x1940	1065x1154x2080	1065x1310x2080	1330x1185x2150	1330x1455x2150	1330x1705x2150
Net Weight	Kg	172	180	187	210	230	260	395	529	657
Gross Weight	Kg	180	190	200	230	260	285	430	575	715
<b>OTHERS</b>										
Max airflow GOLD	m³/h	1200	1200	1200	1500	1500	1500	4500	4500	4500
Max air flow SILVER-BRONZE-BASIC	m³/h	850	850	850	1200	1200	1200	3000	3000	3000
Ø fume exhaust	mm	200	200	200	200	200	200	300	300	300
Noise level	dB	64	64	64	65	65	65	67	67	67

	GOLD-EASY TOUCH 2	SILVER - EASY TOUCH 2	BRONZE - EM	BASIC - EM
Easy Touch 2		X		-
IoT – Danube Online	X	X		-
EM Electronic programmer	-	-	X	X
Autoreverse drum	X	X	X	X
Inverter	X	X	X	X
Outer casing in grey skinplate	X	X	X	-
White coated external panels	-	-	-	X
Stainless Steel drum	X	X	X	-
Galvanized drum	-	-	-	X
SOFT DRY	X	X	X	-
DOUBLE FLOW (Axial+Radial)	-	X	X	-
OPTIMAL FLOW (Optimized axial+radial Flow)	X	-	-	-
Radial Air Flow	-	-	-	X
CARE DRY intelligent moisture control + temperature sensor	X	OPT.	-	-
AIR RECYCLE (Air recycling system)	X	-	-	-
THERMAL INSULATION - Insulated panels	X	-	-	-
Double door glass	X	OPT.	OPT.	-
SPRINKLER	X	OPT.	-	-
Dosing/Vaporising system (softeners/perfumes)	OPT.	OPT.	-	-
Drum Inlet Temperature control	X	OPT. with CARE DRY	-	-

**NEW RANGE**

UNIT.	STD-11	STD-14	STD-18	STD-18 PLUS	STD-22	DD-11 HPI	DD-14 HPI	DD-18 HPI	DD-22 HPI	
<b>MODEL</b>										
Capacity 1/18	Kg	12 x 2	15 x 2	18 x 2	18 x 2	24 x 2	11,7	15,0	18,3	24,3
Capacity 1/20	Kg	11 x 2	14 x 2	17 x 2	17 x 2	22 x 2	10,5	13,5	16,5	21,9
Hourly Output*	Kg/h	30,6	33,8	36	70,7	88	14,4	14,8	15,0	16,6
Evaporation capacity*	l/h	15,3	16,9	18	35,3	44	7,2	7,4	7,50	8,3
<b>DRUM</b>										
Ø Drum	mm	750	750	750	750	835	750	750	750	835
Ø Door	mm	574	574	574	574	574	574	574	574	574
Door center height	mm	547 / 1522	547 / 1522	547 / 1522	547 / 1522	574/1618	976	976	976	1030
Load hole bottom height	mm	260 / 1235	260 / 1235	260 / 1235	260 / 1235	272/1322	689	689	689	743
Drum length	mm	475	610	746	746	800	475	610	746	800
Drum volume	l	210	269	330	330	438	210	270	330	438
<b>POWER</b>										
Drum motor power	KW	0,37 x 2	0,37 x 2	0,37 x 2	0,37 x 2	0,37 x 2	0,37	0,37	0,37	0,37
Fan Motor Power	KW	0,25 x 2	0,25 x 2	0,25 x 2	0,55 x 2	0,55 x 2	0,17	0,17	0,17	0,17
Heating installed power (elec. mod.)	KW	12 x 2	12 x 2	12 x 2	-	-	-	-	-	-
Electric installed power	KW	25,34	25,34	25,34	-	-	3,95	3,95	3,95	3,95
Heat. installed power (gas mod.)	KW	12 x 2	12 x 2	12 x 2	24 x 2	30,4 x 2	-	-	-	-
Electric installed power (gas mod.)	KW	1,34	1,34	1,34	1,94	1,94	-	-	-	-
<b>DIMENSIONS</b>										
Net dimensions (W x D x H)	mm	785x972x1980	785x1106x1980	785x1242x1980	785x1443x1980	870x1328x2117	785x989x1694	785x1029x1694	785x1125x1694	890x1255x1812
Gross dimensions (W x D x H)	mm	865x1055x2126	865x1189x2126	865x1325x2126	865x1457x2126	950x1411x2250	865x1074x1840	865x1114x1840	865x1210x1840	970x1345x1940
Net Weight	Kg	260	275	290	320		310	315	322	345
Gross Weight	Kg	268	293	317	349		318	325	335	365
<b>OTHERS</b>										
Max Air Flow	m <sup>3</sup> /h	500 x 2	500 x 2	500 x 2	750 x 2	900 x 2	variable	variable	variable	variable
Ø fume exhaust	mm	200	200	200	200 x 2	250	NO	NO	NO	NO
Noise level	dB	64	64	64	64	69	61	61	61	61

	SILVER-EASY TOUCH 2	BRONZE - EM	BASIC - EM	HEAT PUMP
	STACK	STACK	STACK	
Easy Touch 2	X	-	-	X
IoT - Danube Online	X	-	-	X
EM Electronic programmer	-	X	X	-
Autoreverse drum	X	X	X	X
Inverter	X	X	X	X
Outer casing in grey skinplate	X	X	-	X
White coated external panels	-	-	X	-
Stainless Steel drum	X	X	-	X
Galvanized drum	-	-	X	-
SOFT DRY	X	X	-	X
OPTIMAL FLOW (Axial+Radial)	X	X	-	X
FULL FLOW (Optimized axial+radial Flow)	-	-	-	-
Radial Air Flow	-	-	X	-
CARE DRY intelligent moisture control + temperature sensor	OPT.	-	-	X
AIR RECYCLE (Air recycling system)	-	-	-	-
THERMAL INSULATION - Insulated panels	-	-	-	X
Double door glass	OPT.	OPT.	-	X
SPRINKLER	OPT.	-	-	-
Dosing/Vaporising system (softeners/perfumes)	OPT.	-	-	-
Drum Inlet Temperature control	OPT. with CARE DRY	-	-	-